

## DIRECT IMPACT WETLAND FIGURES

### I-12 to Bush Environmental Impact Statement USACE Permit No. MVN-2006-0037



*Prepared for*

United States Army Corps of Engineers, New Orleans District  
and  
Louisiana Department of Transportation and Development

June 2011



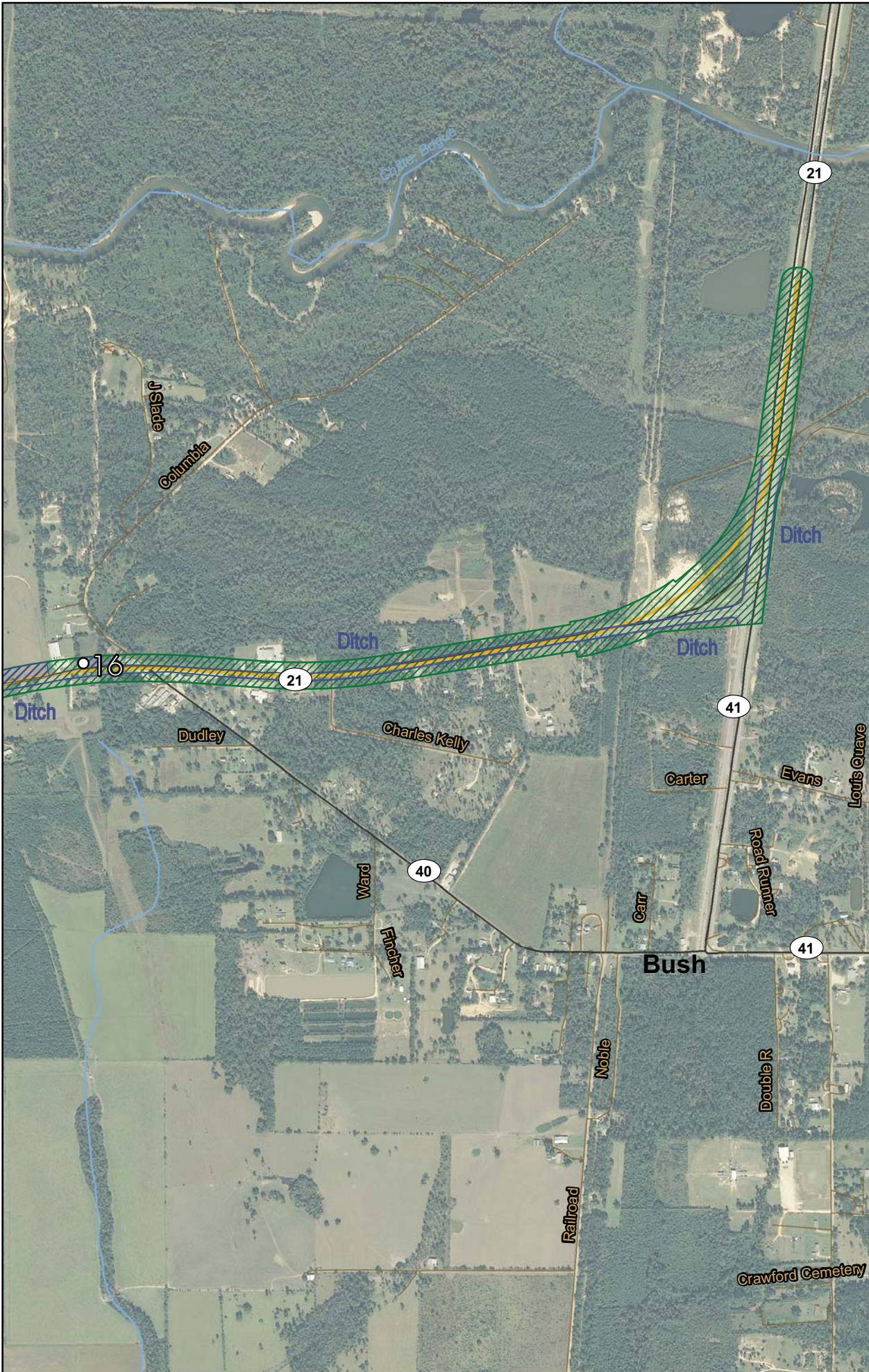
US Army Corps  
of Engineers®  
New Orleans District



*Prepared by*  
**Tetra Tech, Inc.**  
748 Main Street, Suite B  
Baton Rouge, Louisiana 70802

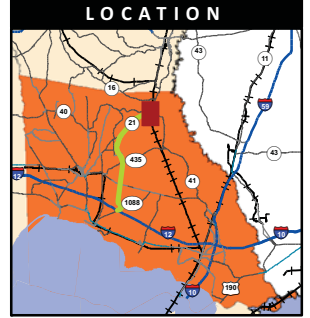


# Alternative B/O Wetland Delineation - 1



**LEGEND**

- Data Point
- Alternative B/O
- ▨ Wetlands/Waters of the US - Area 6
- ▨ Non Wetland
- ⓪ 1088 Highway
- Local Street
- Stream

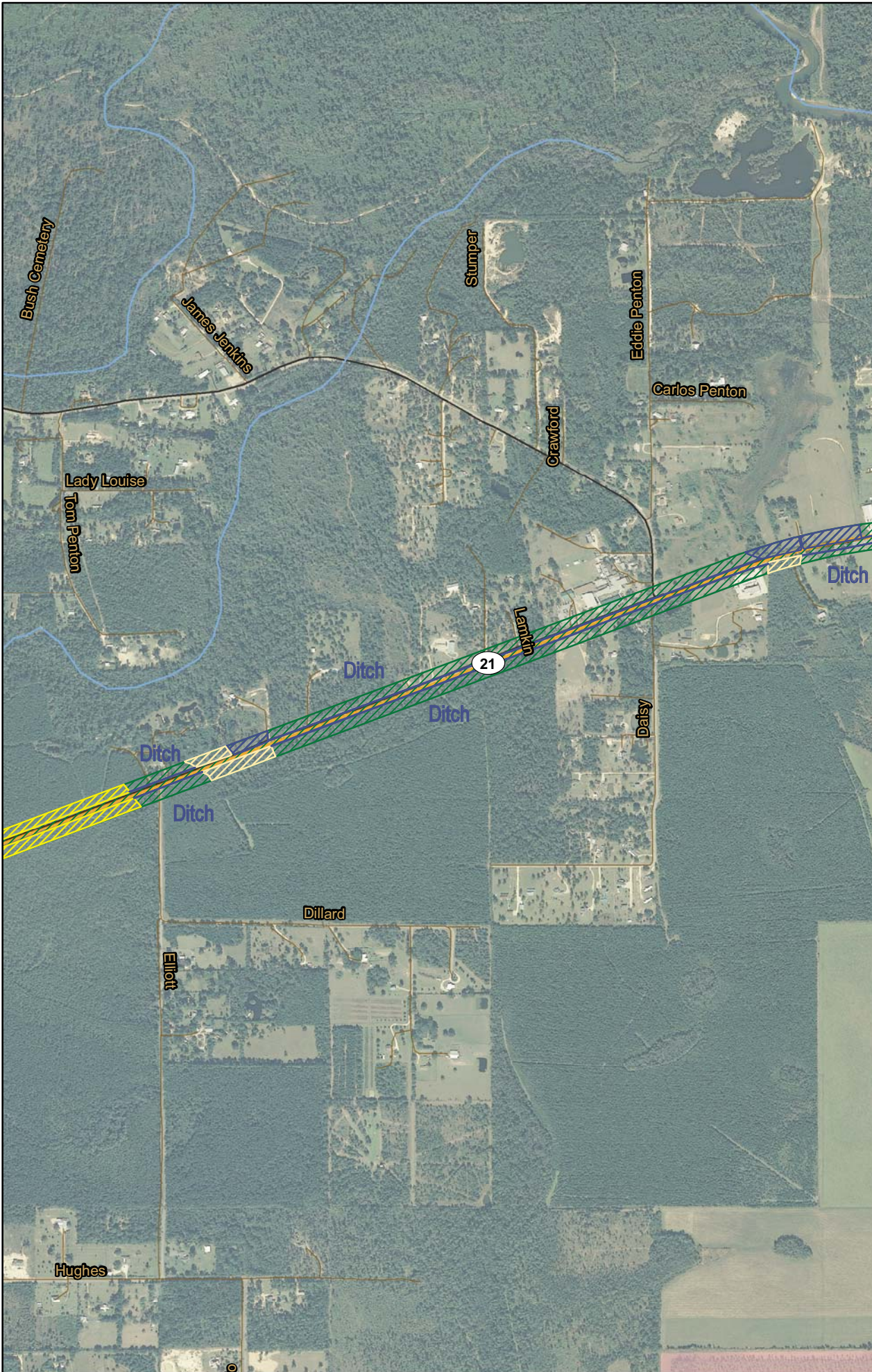


Source: 2008 DOQQ



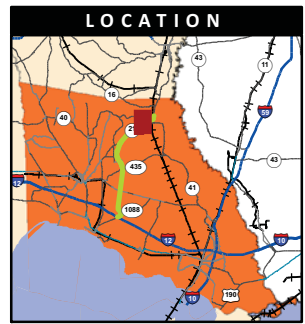


# Alternative B/O Wetland Delineation - 2



**LEGEND**

- Data Point
- Alternative B/O
- ▨ Wetlands/Waters of the US - Area 3
- ▨ Wetlands/Waters of the US - Area 4
- ▨ Wetlands/Waters of the US - Area 6
- ▨ Non Wetland
- ⓪ 1088 Highway
- Local Street
- Stream



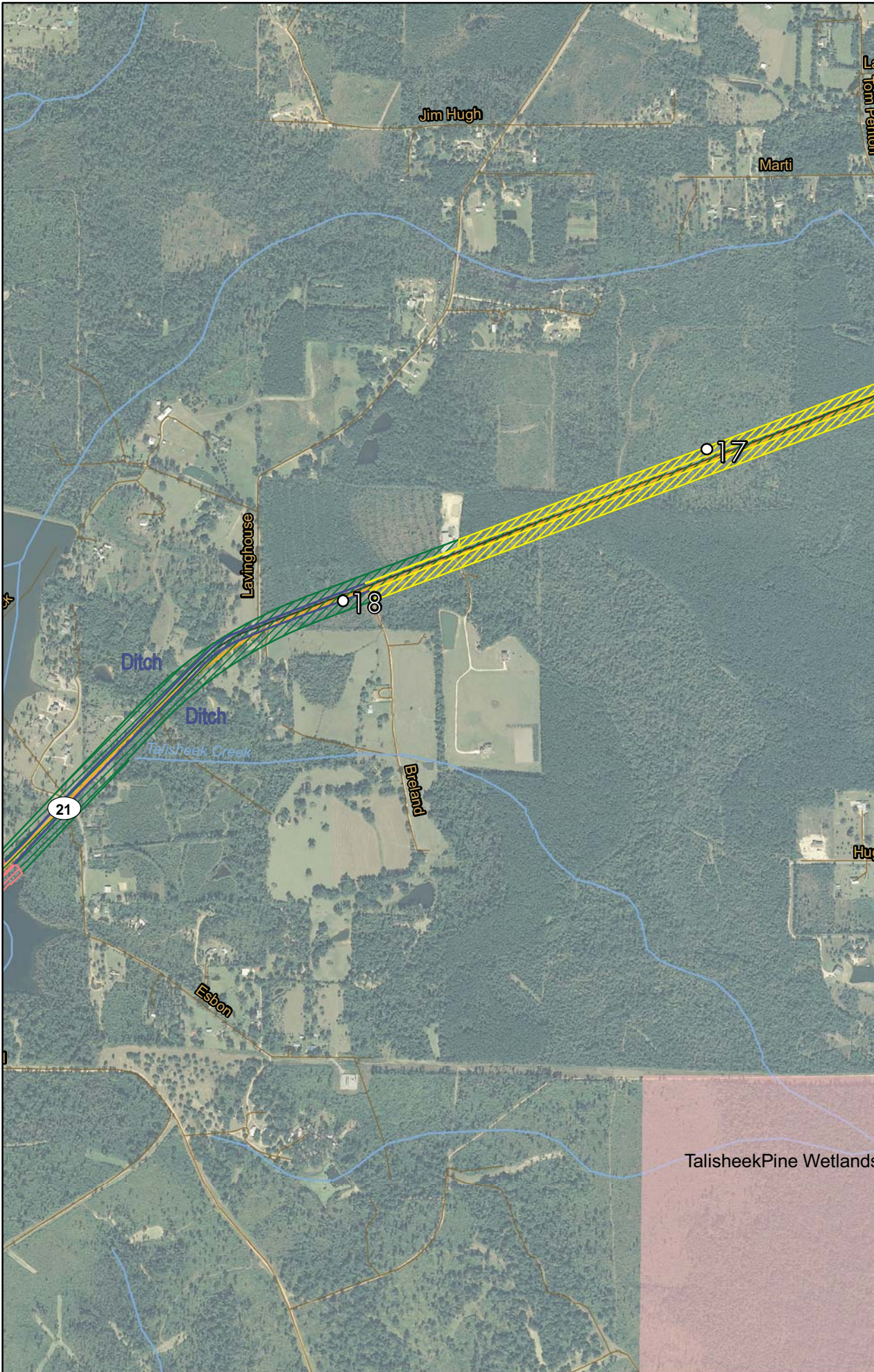
**US Army Corps of Engineers**  
New Orleans District



Source: 2008 DOQQ

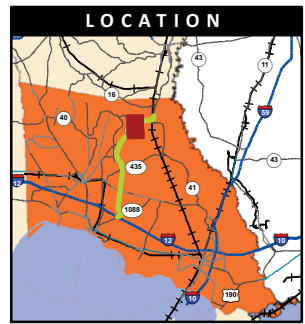
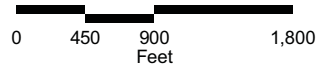


# Alternative B/O Wetland Delineation - 3



**LEGEND**

- Data Point
- Alternative B/O
- ▨ Wetlands/Waters of the US - Area 3
- ▨ Wetlands/Waters of the US - Area 5
- ▨ Wetlands/Waters of the US - Area 6
- ▨ Non Wetland
- ⓪ 1088 Highway
- Local Street
- Stream



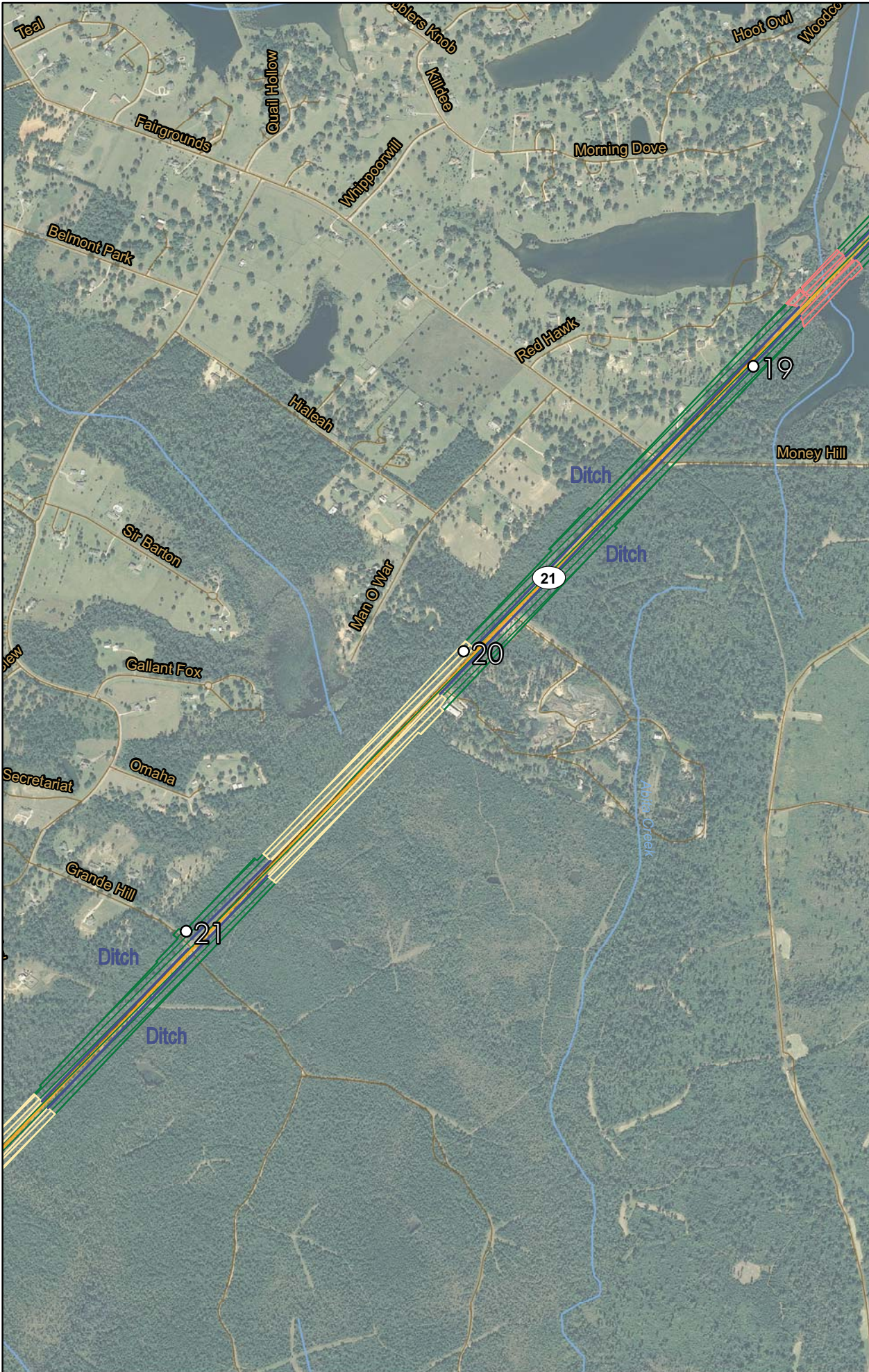
**US Army Corps of Engineers**  
New Orleans District



Source: 2008 DOQQ

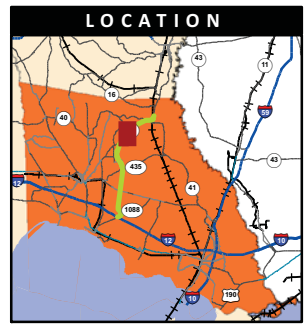
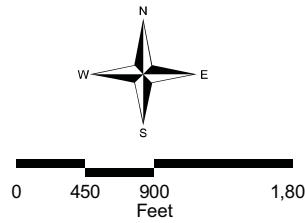


# Alternative B/O Wetland Delineation - 4



**LEGEND**

- Data Point
- Alternative B/O
- ▨ Wetlands/Waters of the US - Area 4
- ▨ Wetlands/Waters of the US - Area 5
- ▨ Wetlands/Waters of the US - Area 6
- ▨ Non Wetland
- ⓪ 1088 Highway
- Local Street
- Stream

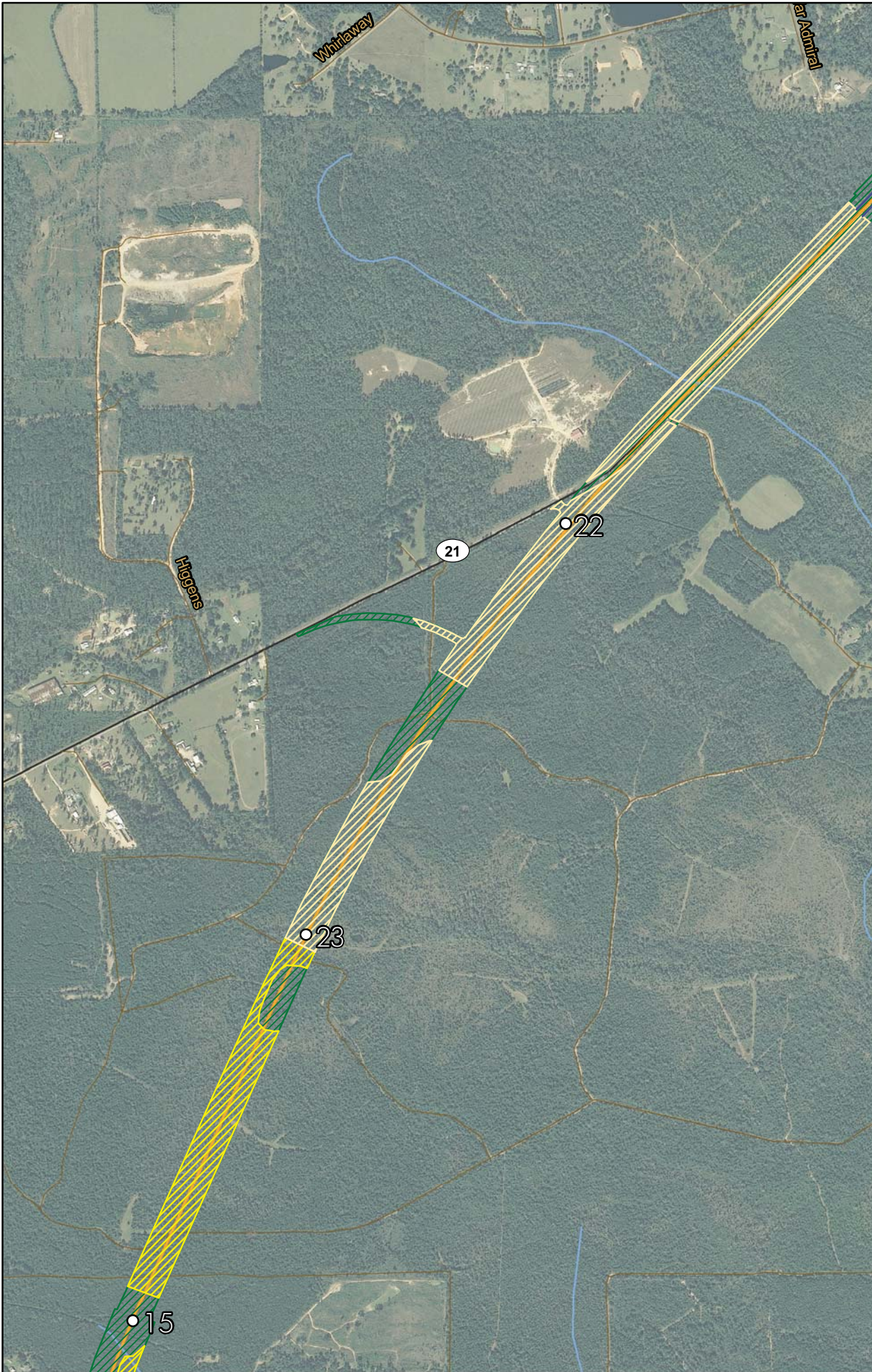


Source: 2008 DOQQ



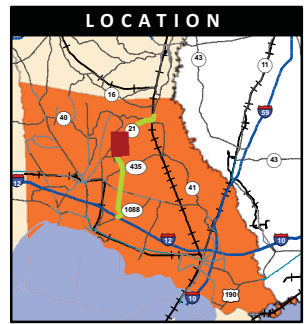


# Alternative B/O Wetland Delineation - 5



**LEGEND**

- Data Point
- Alternative B/O
- ▨ Wetlands/Waters of the US - Area 3
- ▨ Wetlands/Waters of the US - Area 4
- ▨ Wetlands/Waters of the US - Area 6
- ▨ Non Wetland
- ⓪ 1088 Highway
- Local Street
- Stream



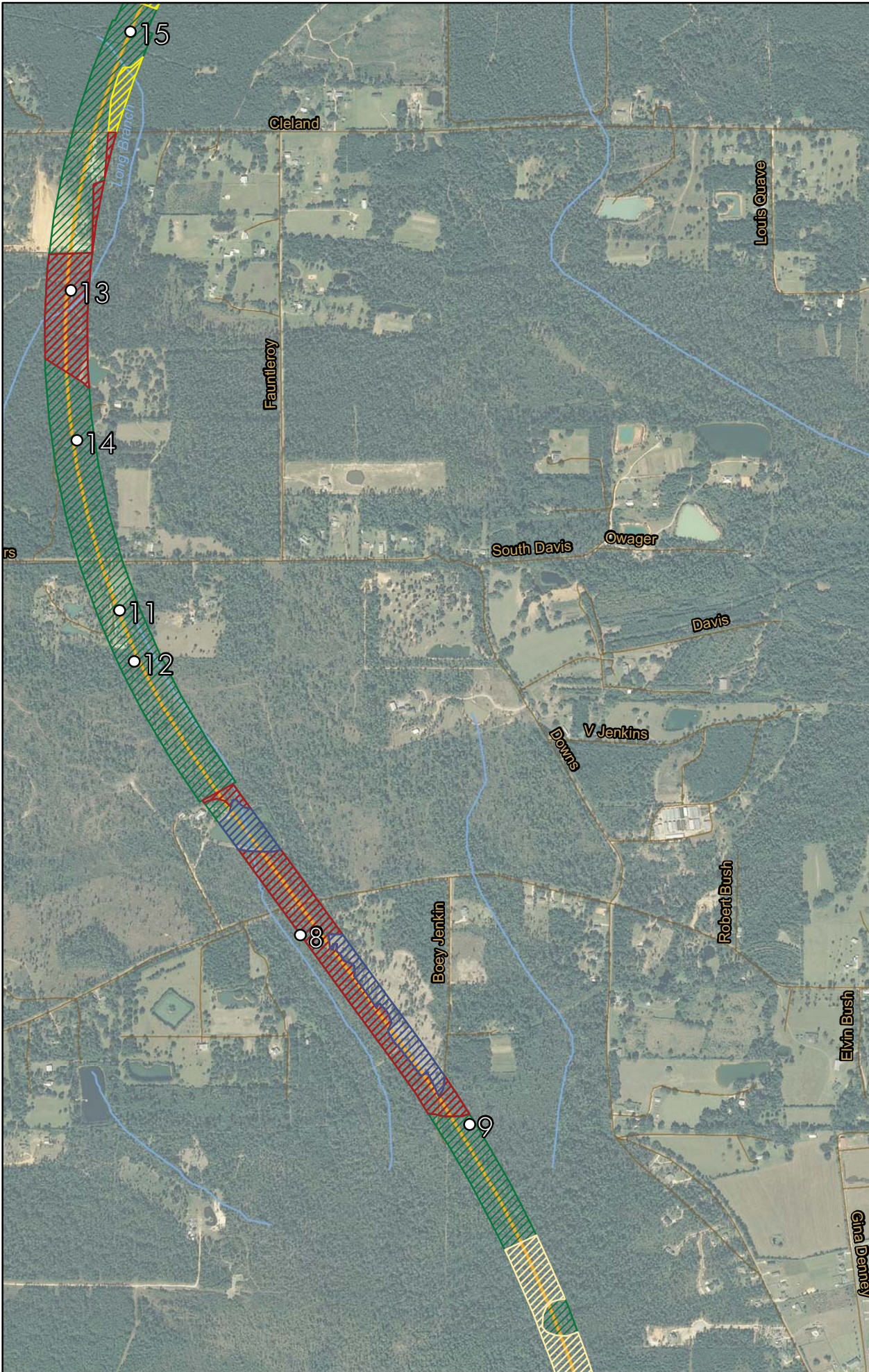
**US Army Corps of Engineers**  
New Orleans District



Source: 2008 DOQQ

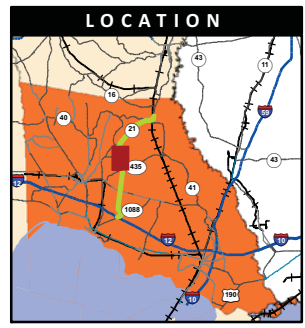
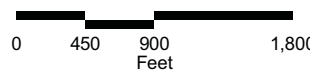


# Alternative B/O Wetland Delineation - 6



**LEGEND**

- Data Point
- Alternative B/O
- ▨ Wetlands/Waters of the US - Area 1
- ▨ Wetlands/Waters of the US - Area 3
- ▨ Wetlands/Waters of the US - Area 4
- ▨ Wetlands/Waters of the US - Area 6
- ▨ Non Wetland
- Ⓜ 1088 Highway
- Local Street
- Stream



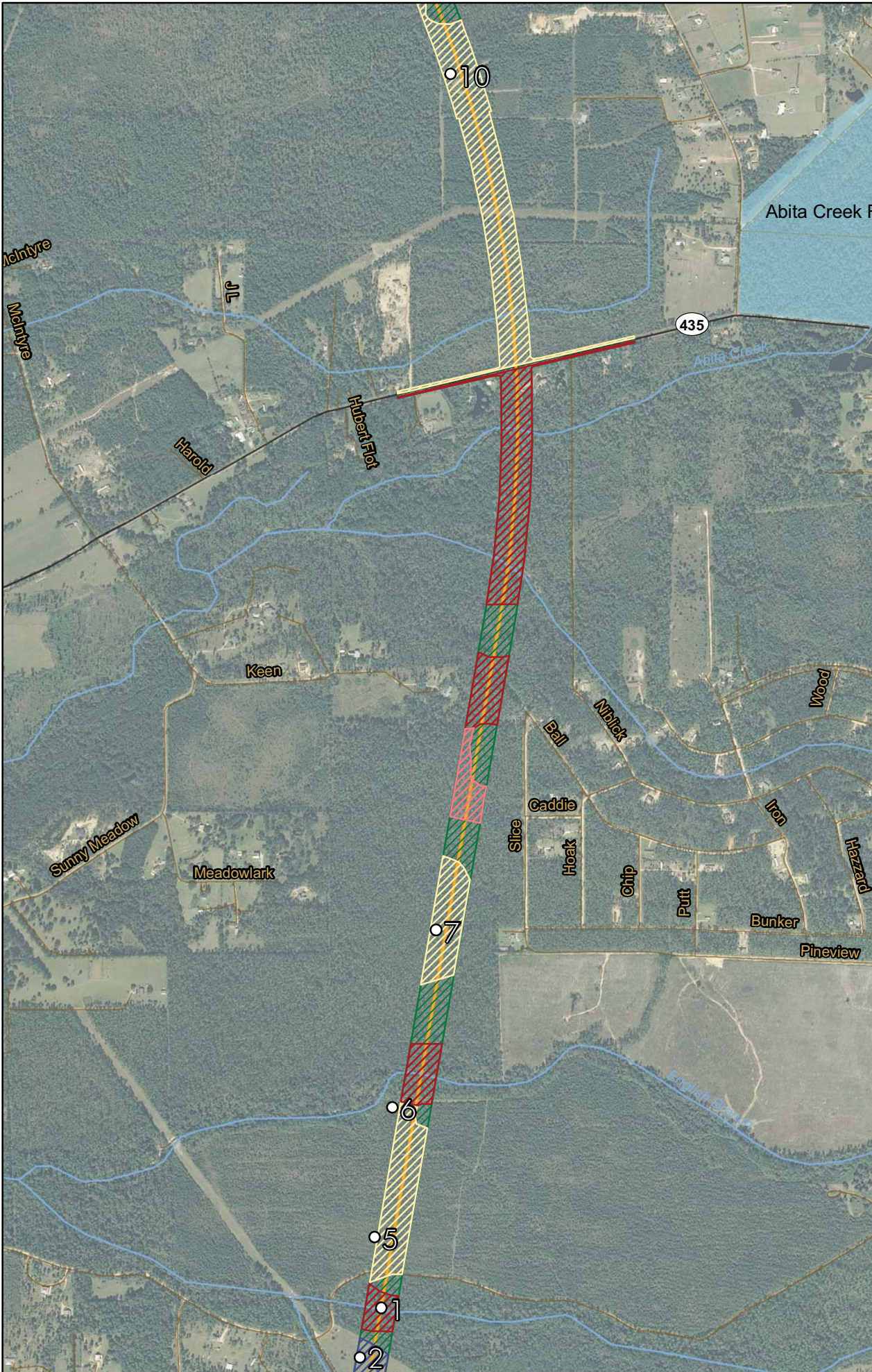
**US Army Corps of Engineers**  
New Orleans District



Source: 2008 DOQQ

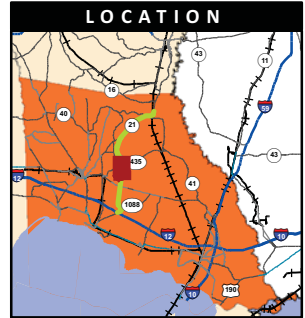
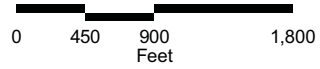


# Alternative B/O Wetland Delineation - 7



**LEGEND**

- Data Point
- Alternative B/O
- ▨ Wetlands/Waters of the US - Area 1
- ▨ Wetlands/Waters of the US - Area 4
- ▨ Wetlands/Waters of the US - Area 5
- ▨ Non Wetland
- ⊖(1088) Highway
- Local Street
- Stream



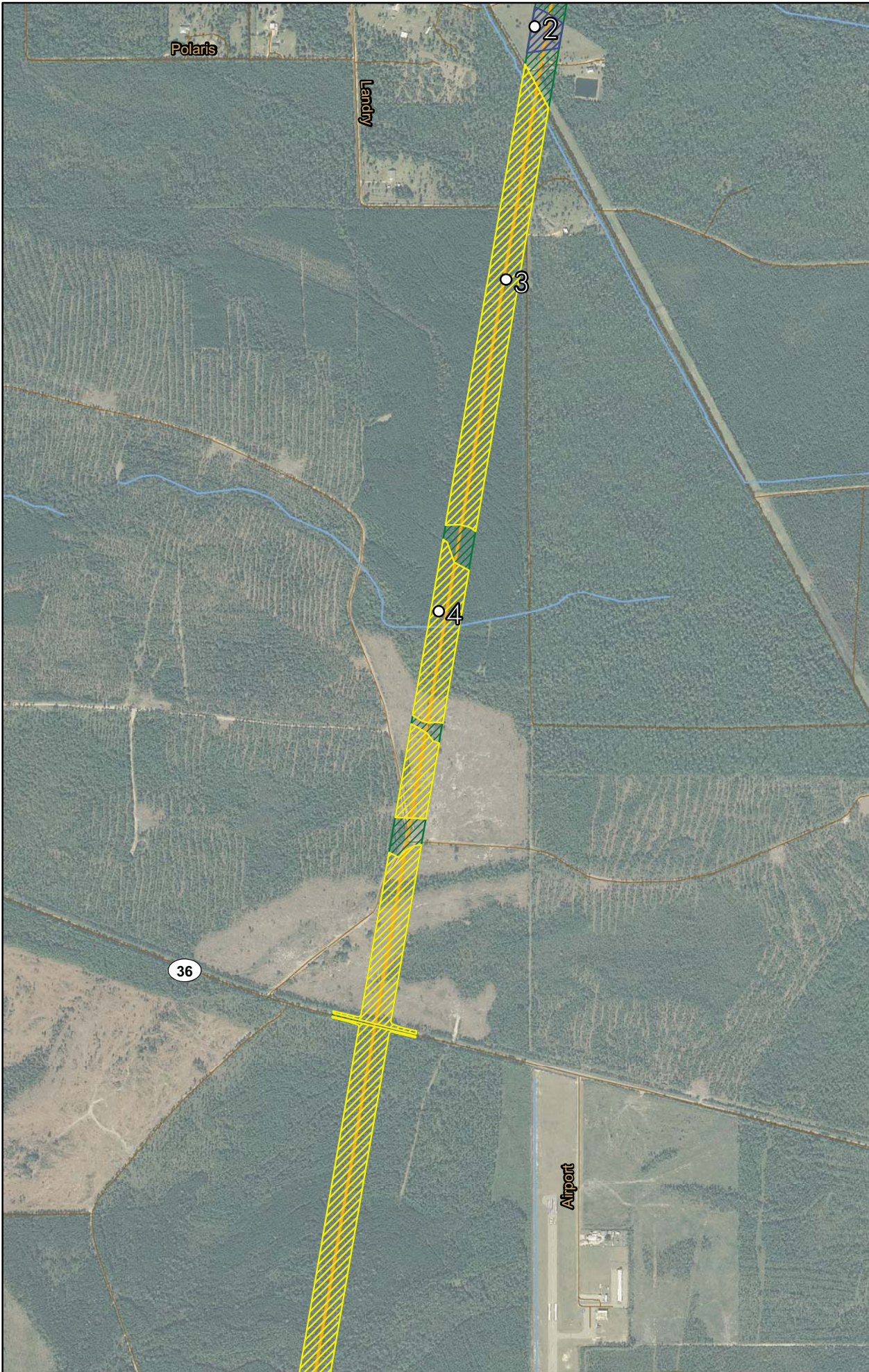
**US Army Corps of Engineers**  
New Orleans District



Source: 2008 DOQQ

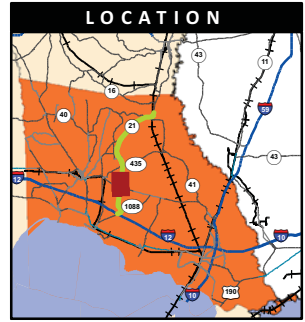


# Alternative B/O Wetland Delineation - 8



**LEGEND**

- Data Point
- Alternative B/O
- ▨ Wetlands/Waters of the US - Area 3
- ▨ Wetlands/Waters of the US - Area 6
- ▨ Non Wetland
- ⓪ 1088 Highway
- Local Street
- Stream



**US Army Corps of Engineers**  
New Orleans District



Source: 2008 DOQQ

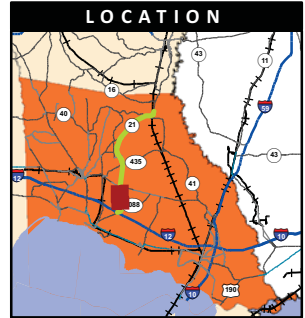
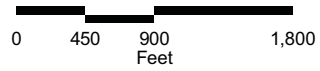


# Alternative B/O Wetland Delineation - 9



**LEGEND**

- Data Point
- Alternative B/O
- ▨ Wetlands/Waters of the US - Area 1
- ▨ Wetlands/Waters of the US - Area 3
- ▨ Wetlands/Waters of the US - Area 5
- ▨ Non Wetland
- ⓪ 1088 Highway
- Local Street
- Stream



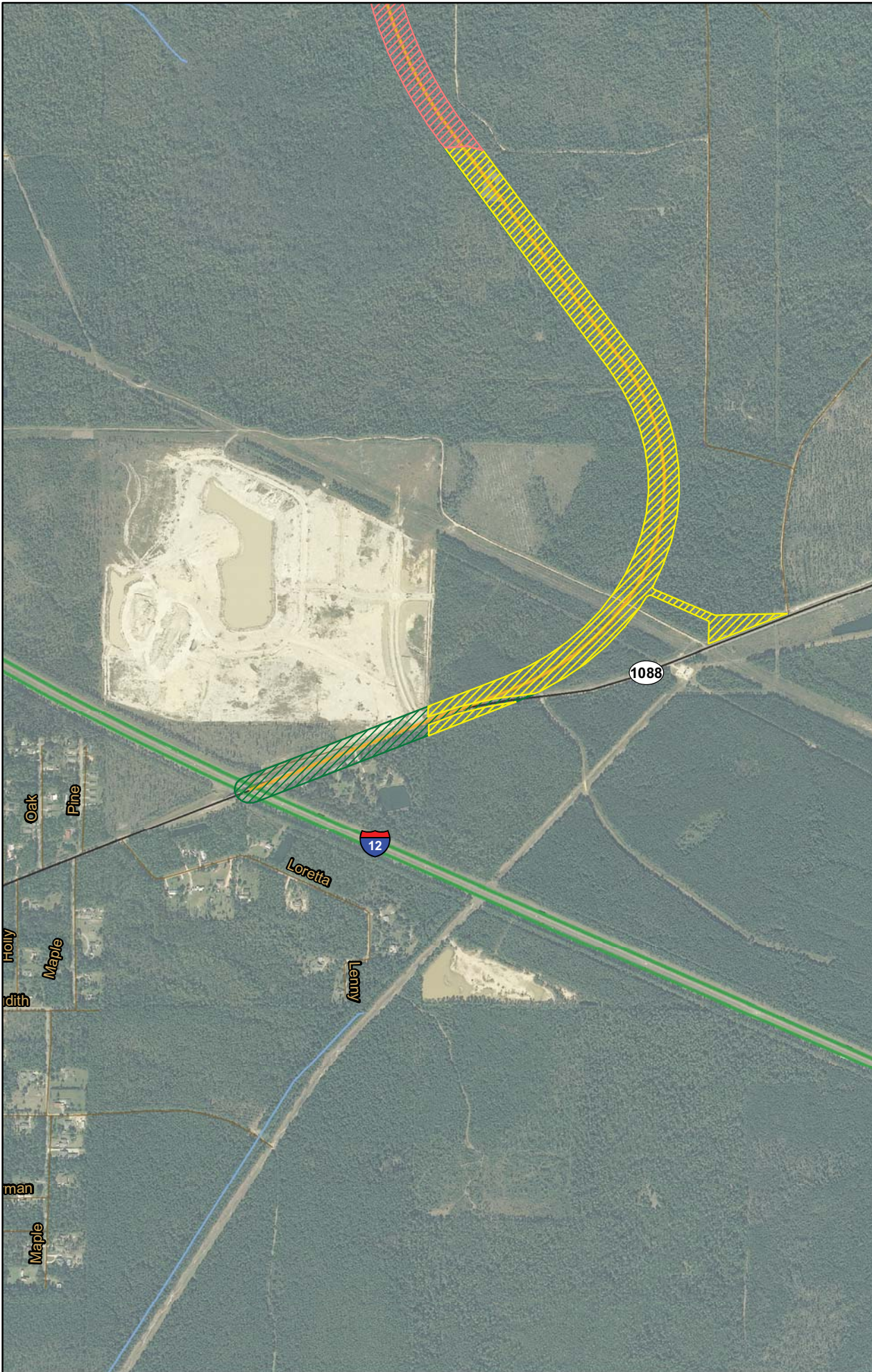
**US Army Corps of Engineers**  
New Orleans District



Source: 2008 DOQQ

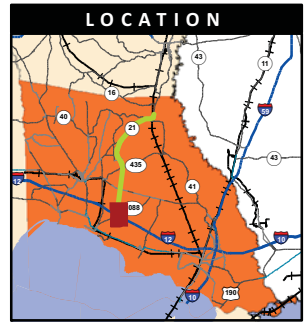


# Alternative B/O Wetland Delineation - 10



**LEGEND**

- Data Point
- Alternative B/O
- ▨ Wetlands/Waters of the US - Area 3
- ▨ Wetlands/Waters of the US - Area 5
- ▨ Non Wetland
- 12 Interstate
- 1088 Highway
- Local Street
- Stream



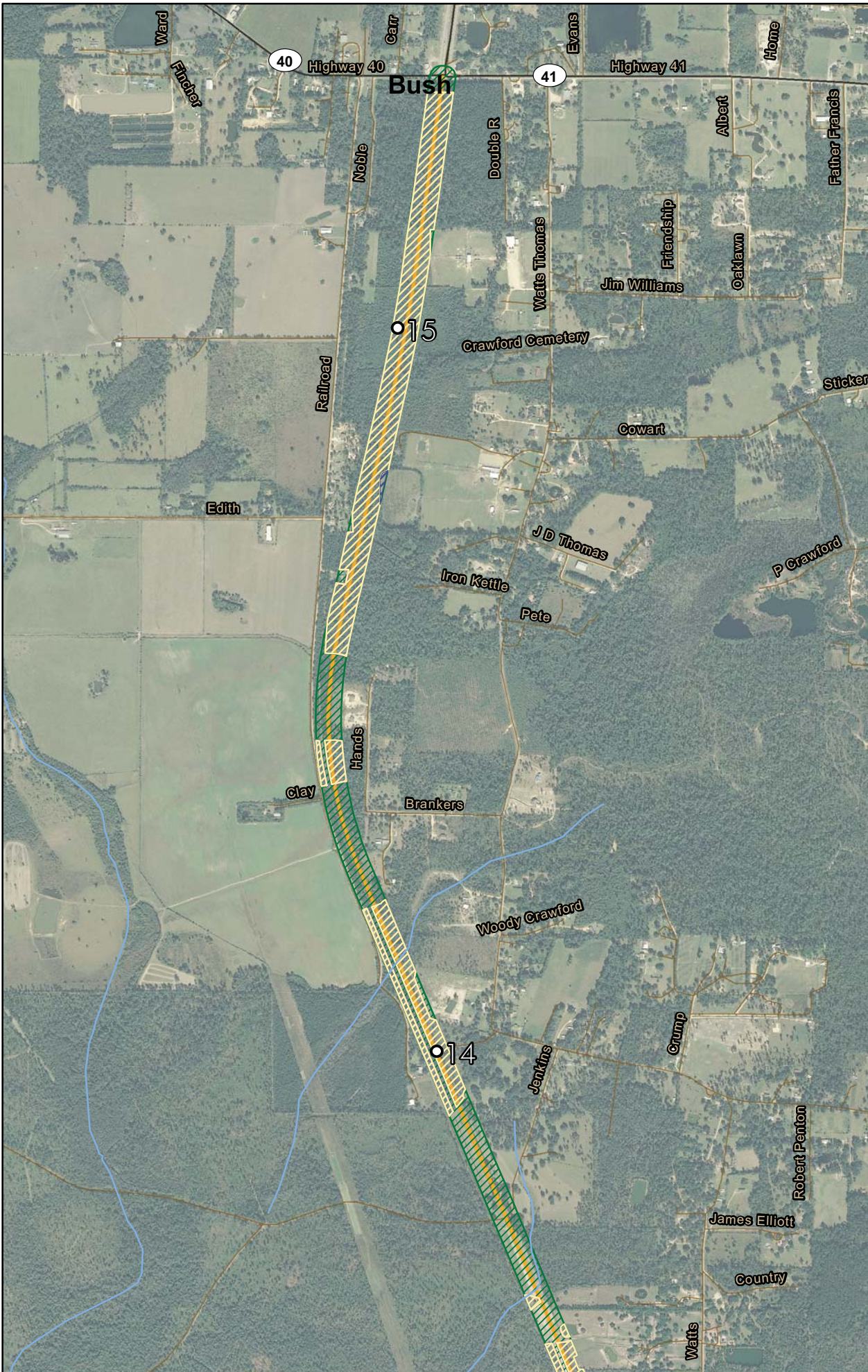
Oak  
Pine  
Loreta  
Lenny  
Maple  
Holly  
Maple  
man

Source: 2008 DOQQ



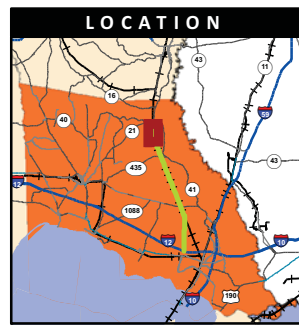
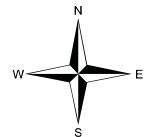


# Alternative J Wetland Delineation - 1



**LEGEND**

- Data Point
- Alternative J
- ▨ Wetlands/Waters of the US Area 4
- ▨ Wetlands/Waters of the US Area 6
- ▨ Non Wetland
- ⊖ Highway
- Local Street
- Stream

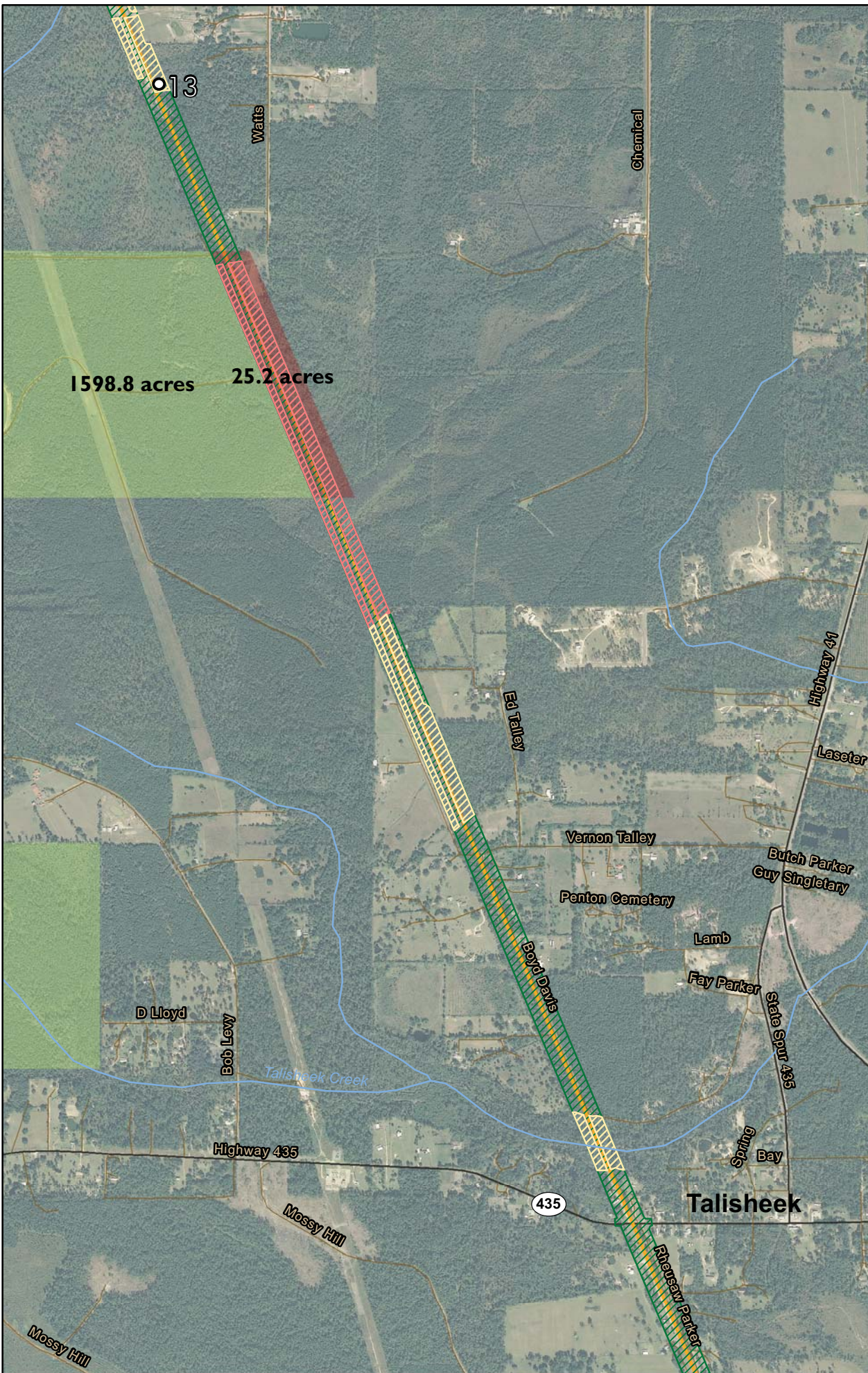


Source: 2008 DOQQ, USGS 2004



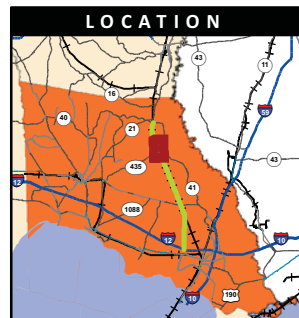


# Alternative J Wetland Delineation - 2



**LEGEND**

- Data Point
- Alternative J
- ▨ Wetlands/Waters of the US Area 4
- ▨ Wetlands/Waters of the US Area 5
- ▨ Non Wetland
- Dolly T Mitigation Bank
- Dolly T Impacted Acres
- Ⓢ Highway
- Local Street
- Stream

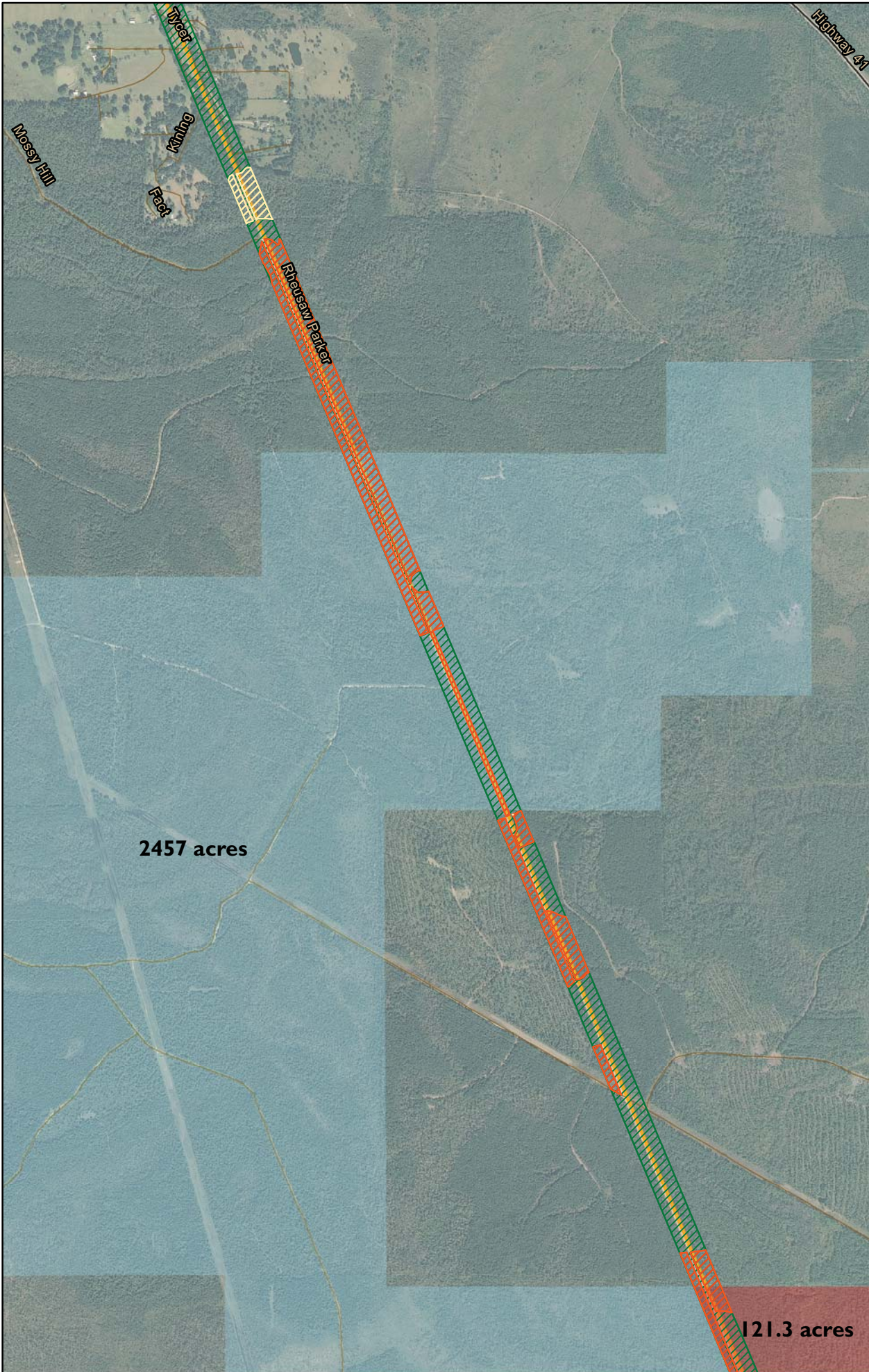


Source: 2008 DOQQ, USGS 2004



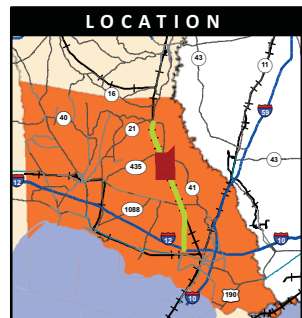


# Alternative J Wetland Delineation - 3



**LEGEND**

- Data Point
- Alternative J
- ▨ Wetlands/Waters of the US Area 2
- ▨ Wetlands/Waters of the US Area 4
- ▨ Non Wetland
- Mossy Hill Mitigation Bank
- Mossy Hill Impacted Acres
- ⓪ 36 Highway
- Local Street
- Stream



2457 acres

121.3 acres

Source: 2008 DOQQ, USGS 2004



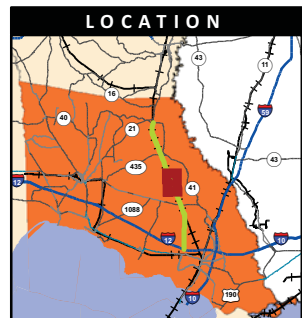


# Alternative J Wetland Delineation - 4



**LEGEND**

- Data Point
- Alternative J
- ▨ Wetlands/Waters of the US Area 1
- ▨ Wetlands/Waters of the US Area 2
- ▨ Non Wetland
- Mossy Hill Mitigation Bank
- Mossy Hill Impacted Acres
- ⓪ 36 Highway
- Local Street
- Stream



Source: 2008 DOQQ, USGS 2004



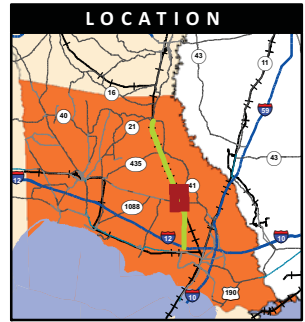


# Alternative J Wetland Delineation - 5



**LEGEND**

- Data Point
- Alternative J
- ▨ Wetlands/Waters of the US Area 1
- ▨ Wetlands/Waters of the US Area 2
- ▨ Non Wetland
- ⓪ 36 Highway
- Local Street
- Stream



Source: 2008 DOQQ, USGS 2004



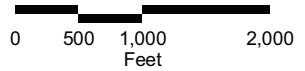


# Alternative J Wetland Delineation - 6

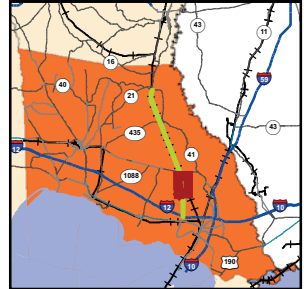


## LEGEND

- Data Point
- Alternative J
- ▨ Wetlands/Waters of the US Area 2
- ▨ Wetlands/Waters of the US Area 3
- ▨ Non Wetland
- ⓪ 36 Highway
- Local Street
- Stream



## LOCATION



Source: 2008 DOQQ, USGS 2004

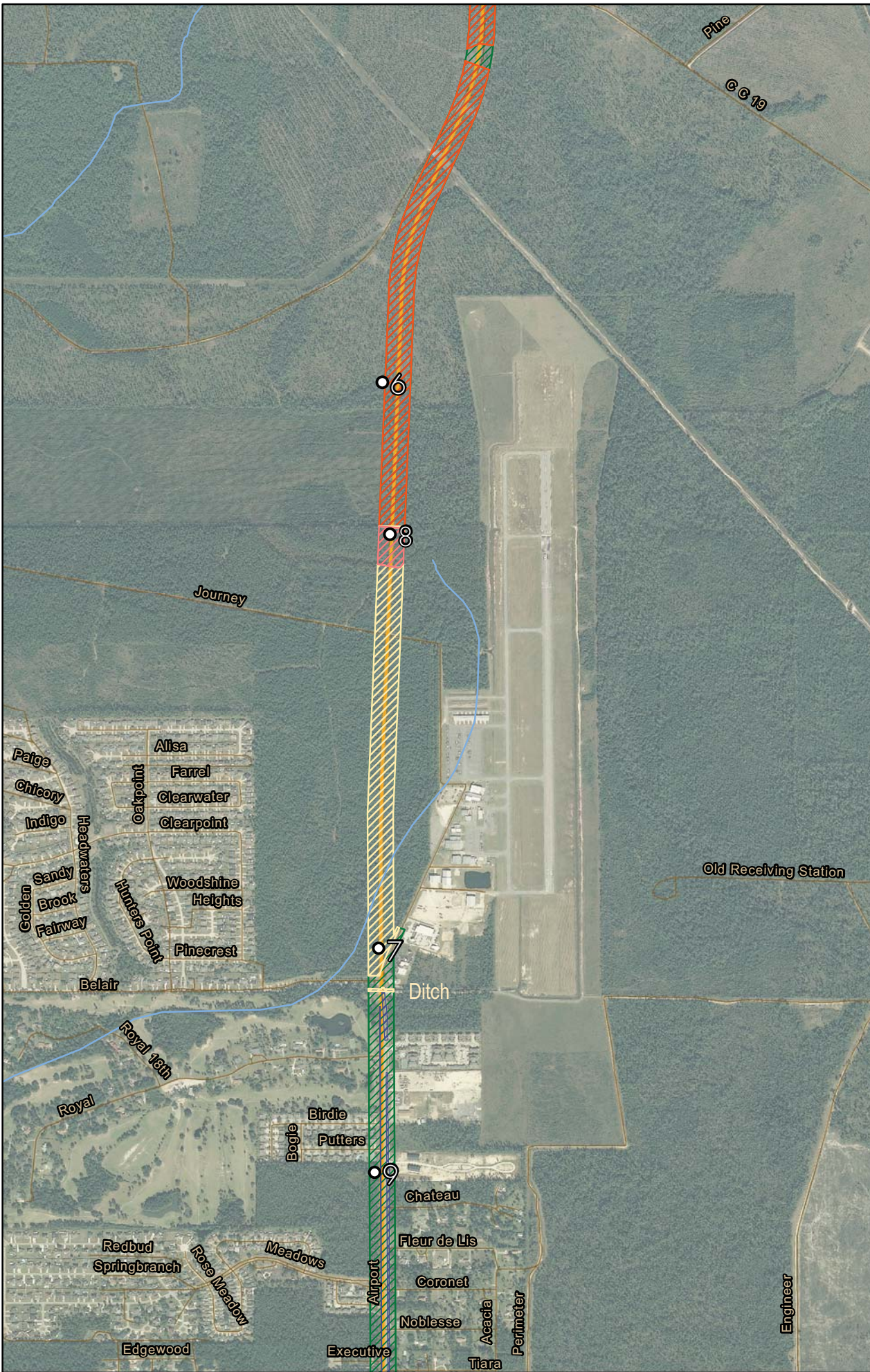


**US Army Corps of Engineers**  
New Orleans District



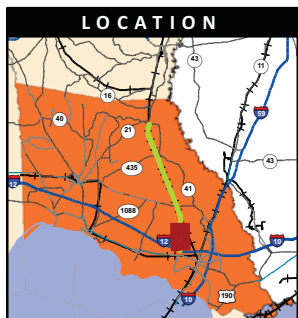
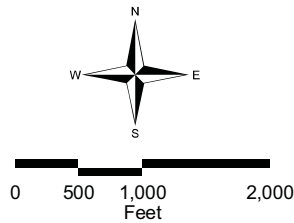


# Alternative J Wetland Delineation - 7



**LEGEND**

- Data Point
- Alternative J
- ▨ Wetlands/Waters of the US Area 2
- ▨ Wetlands/Waters of the US Area 4
- ▨ Wetland/Waters of the US Area 5
- ▨ Wetland/Waters of the US Area 6
- ▨ Non Wetland
- ⊖36 Highway
- Local Street
- Stream



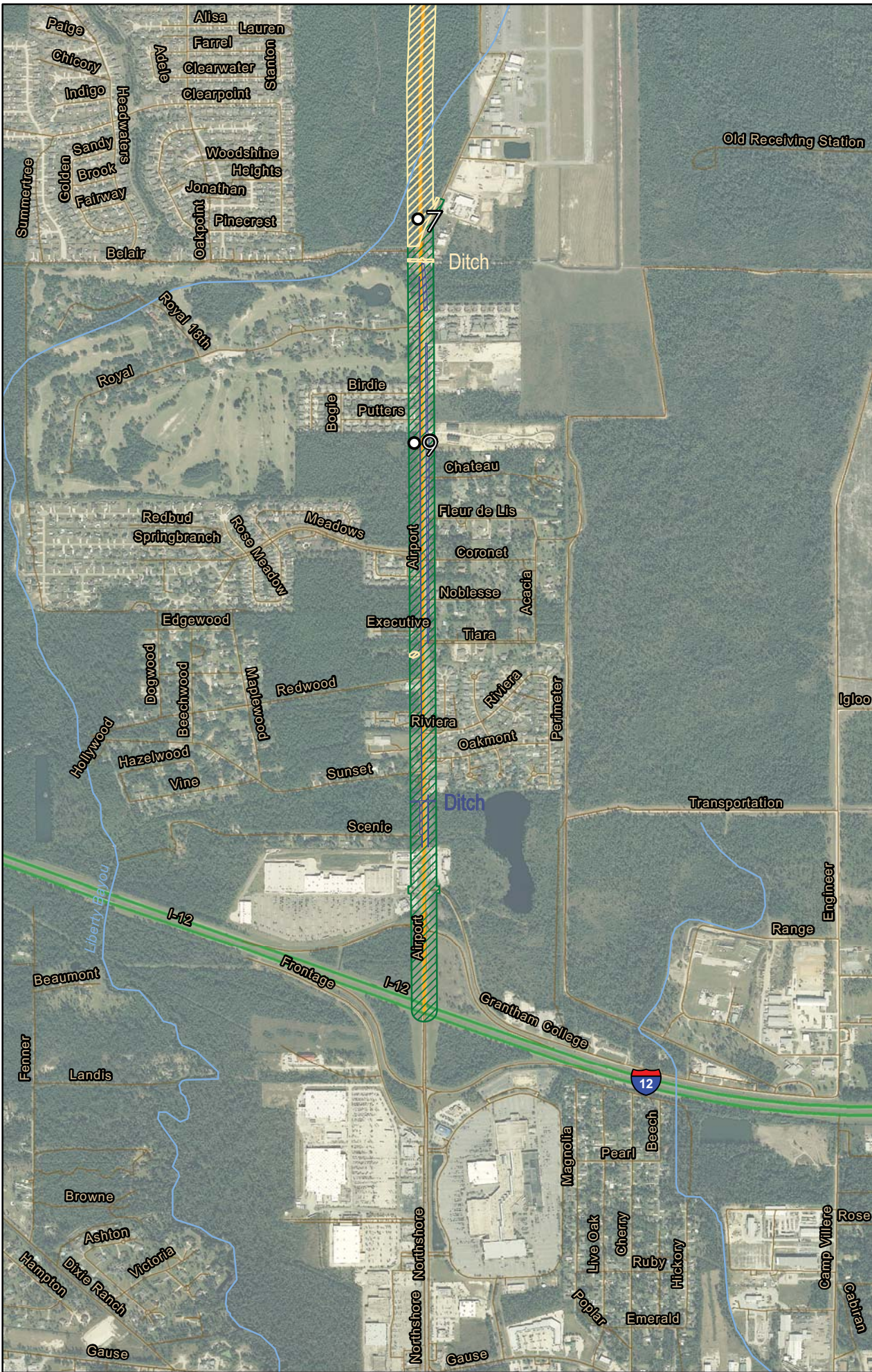
Source: 2008 DOQQ, USGS 2004



Engineer

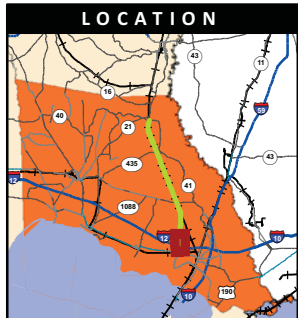
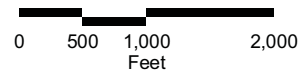


# Alternative J Wetland Delineation - 8



**LEGEND**

- Data Point
- Alternative J
- ▨ Wetlands/Waters of the US Area 4
- ▨ Wetlands/Waters of the US Area 6
- ▨ Non Wetland
- 12 Interstate
- 36 Highway
- Local Street
- Stream



Source: 2008 DOQQ, USGS 2004



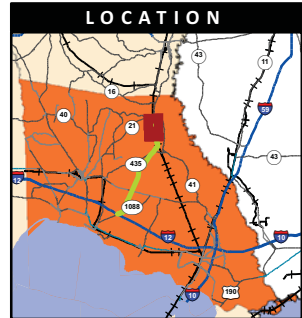
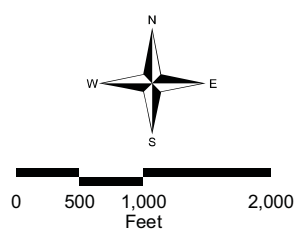


# Alternative P Wetland Delineation - 1



**LEGEND**

- Data Point
- Alternative P
- ▨ Wetlands/Waters of the US - Area 4
- ▨ Wetlands/Waters of the US - Area 6
- ▨ Non Wetland
- ⓪ 434 Highway
- Local Street
- Stream

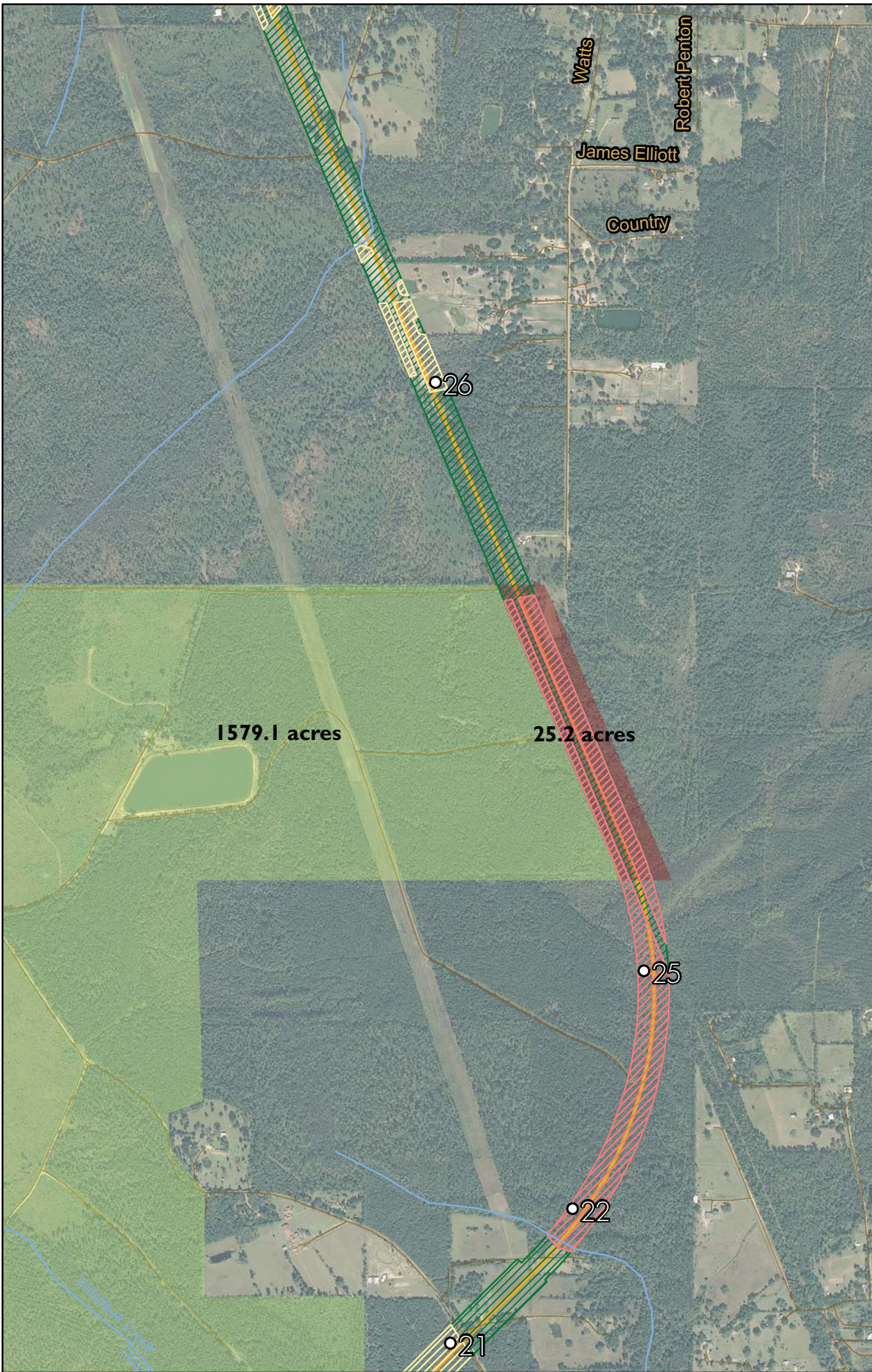


Source: 2008 DOQQ, USGS 2004



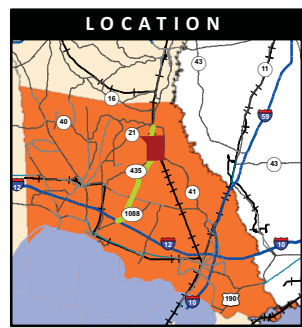
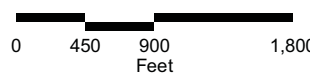
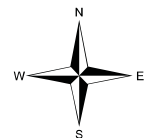


# Alternative P Wetland Delineation - 2



**LEGEND**

- Data Point
- Alternative P
- ▨ Wetlands/Waters of the US - Area 4
- ▨ Wetlands/Waters of the US - Area 5
- ▨ Non Wetland
- Dolly T Mitigation Bank
- Dolly T Impacted Acres
- ⓪ 434 Highway
- Local Street
- Stream

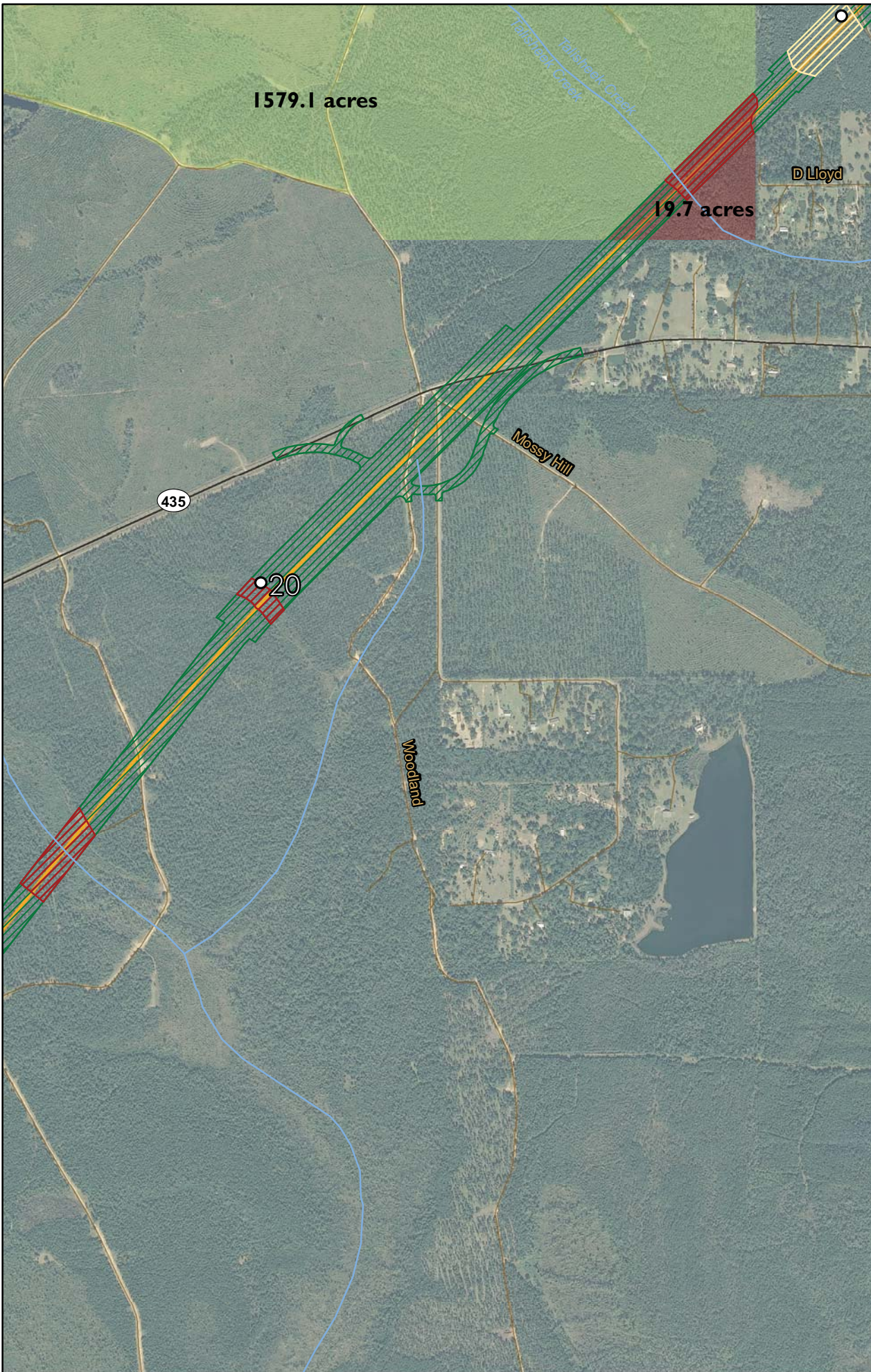


Source: 2008 DOQQ, USGS 2004



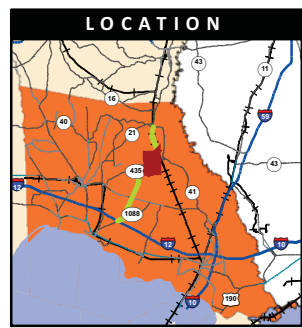
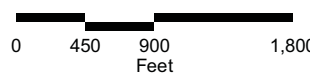
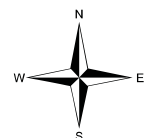


# Alternative P Wetland Delineation - 3



**LEGEND**

- Data Point
- Alternative P
- ▨ Wetlands/Waters of the US - Area 1
- ▨ Wetlands/Waters of the US - Area 4
- ▨ Non Wetland
- Dolly T Mitigation Bank
- Dolly T Impacted Acres
- ⓪ 434 Highway
- Local Street
- Stream

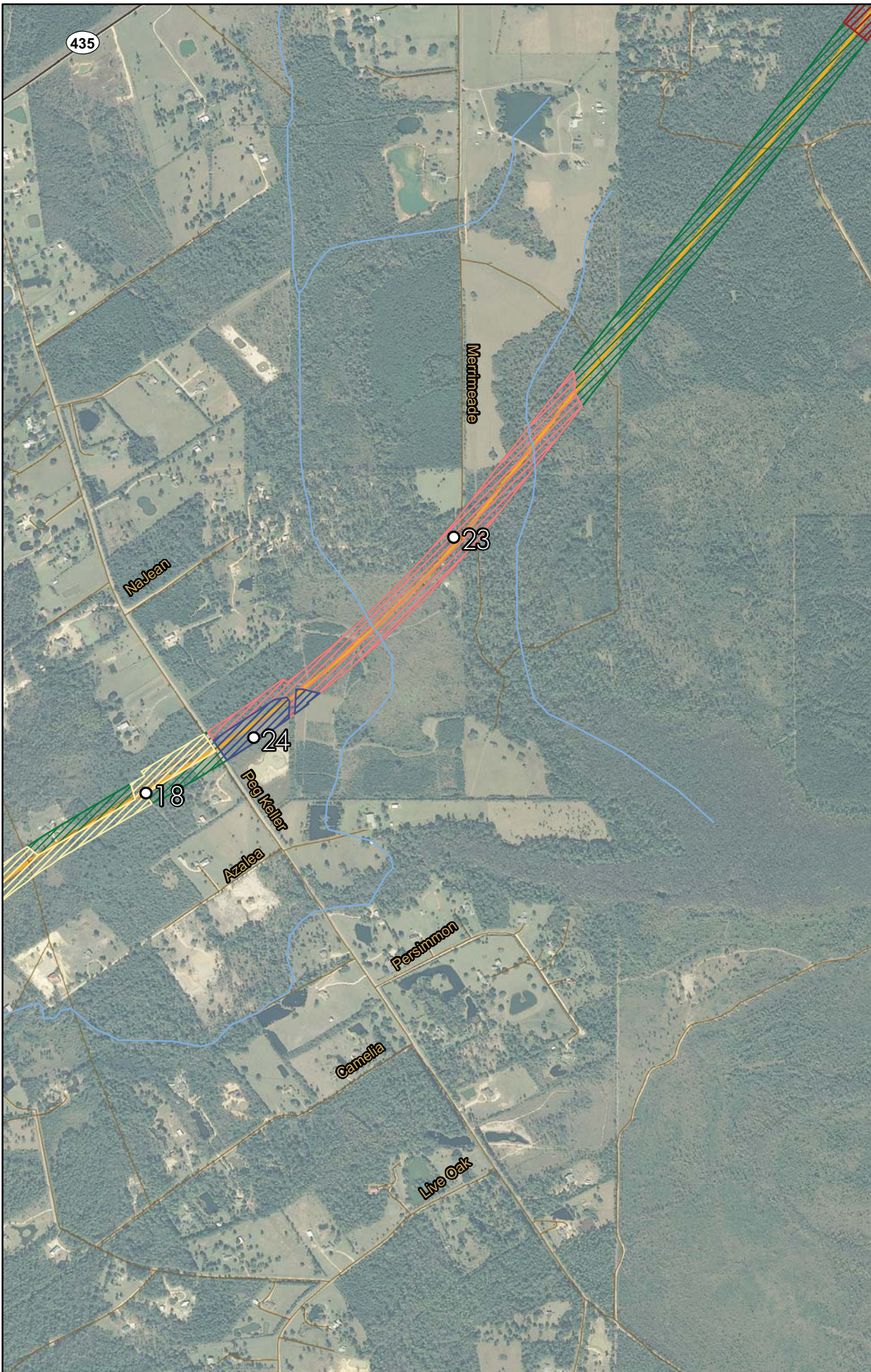


Source: 2008 DOQQ, USGS 2004



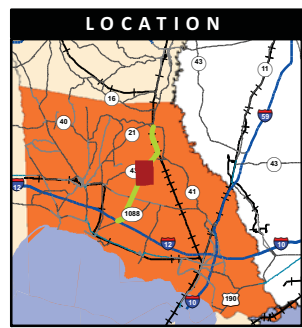
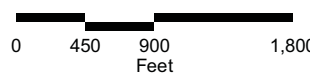
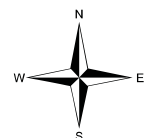


# Alternative P Wetland Delineation - 4



**LEGEND**

- Data Point
- Alternative P
- ▨ Wetlands/Waters of the US - Area 1
- ▨ Wetlands/Waters of the US - Area 4
- ▨ Wetlands/Waters of the US - Area 5
- ▨ Wetlands/Waters of the US - Area 6
- ▨ Non Wetland
- ⓪ 434 Highway
- Local Street
- Stream

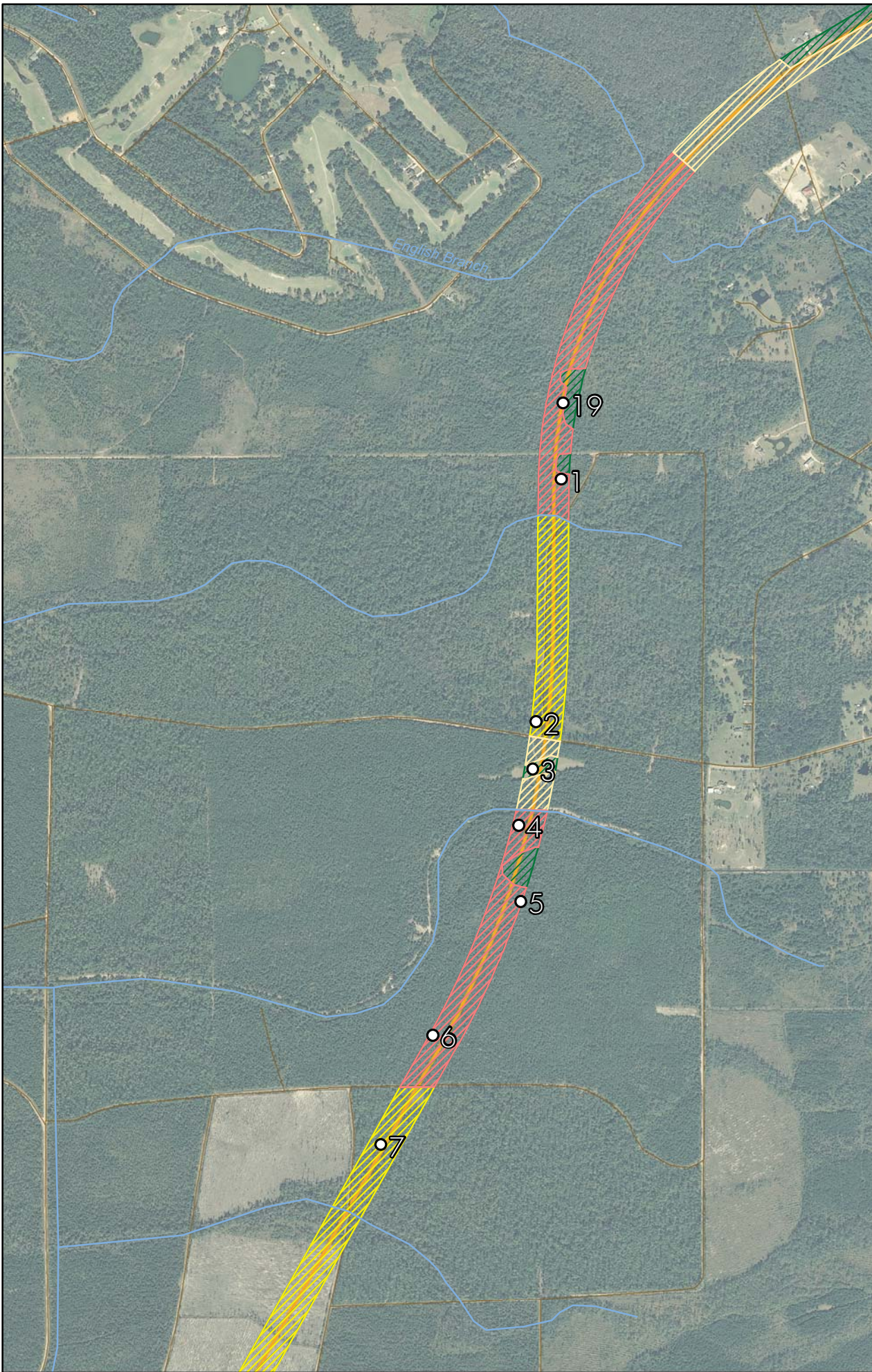


Source: 2008 DOQQ, USGS 2004



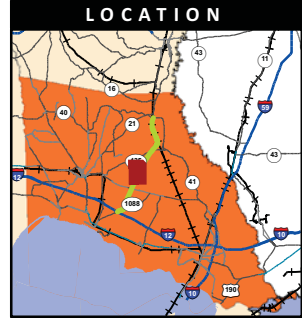
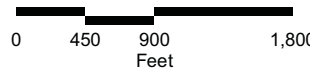


# Alternative P Wetland Delineation - 5



**LEGEND**

- Data Point
- Alternative P
- ▨ Wetlands/Waters of the US - Area 3
- ▨ Wetlands/Waters of the US - Area 4
- ▨ Wetlands/Waters of the US - Area 5
- ▨ Non Wetland
- ⓪ 434 Highway
- Local Street
- Stream



Source: 2008 DOQQ, USGS 2004



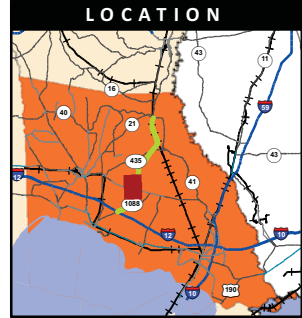
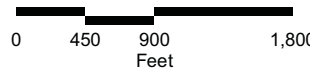


# Alternative P Wetland Delineation - 6



**LEGEND**

- Data Point
- Alternative P
- ▨ Wetlands/Waters of the US - Area 3
- ▨ Wetlands/Waters of the US - Area 5
- ▨ Wetlands/Waters of the US - Area 6
- ▨ Non Wetland
- ⓪ 434 Highway
- Local Street
- Stream

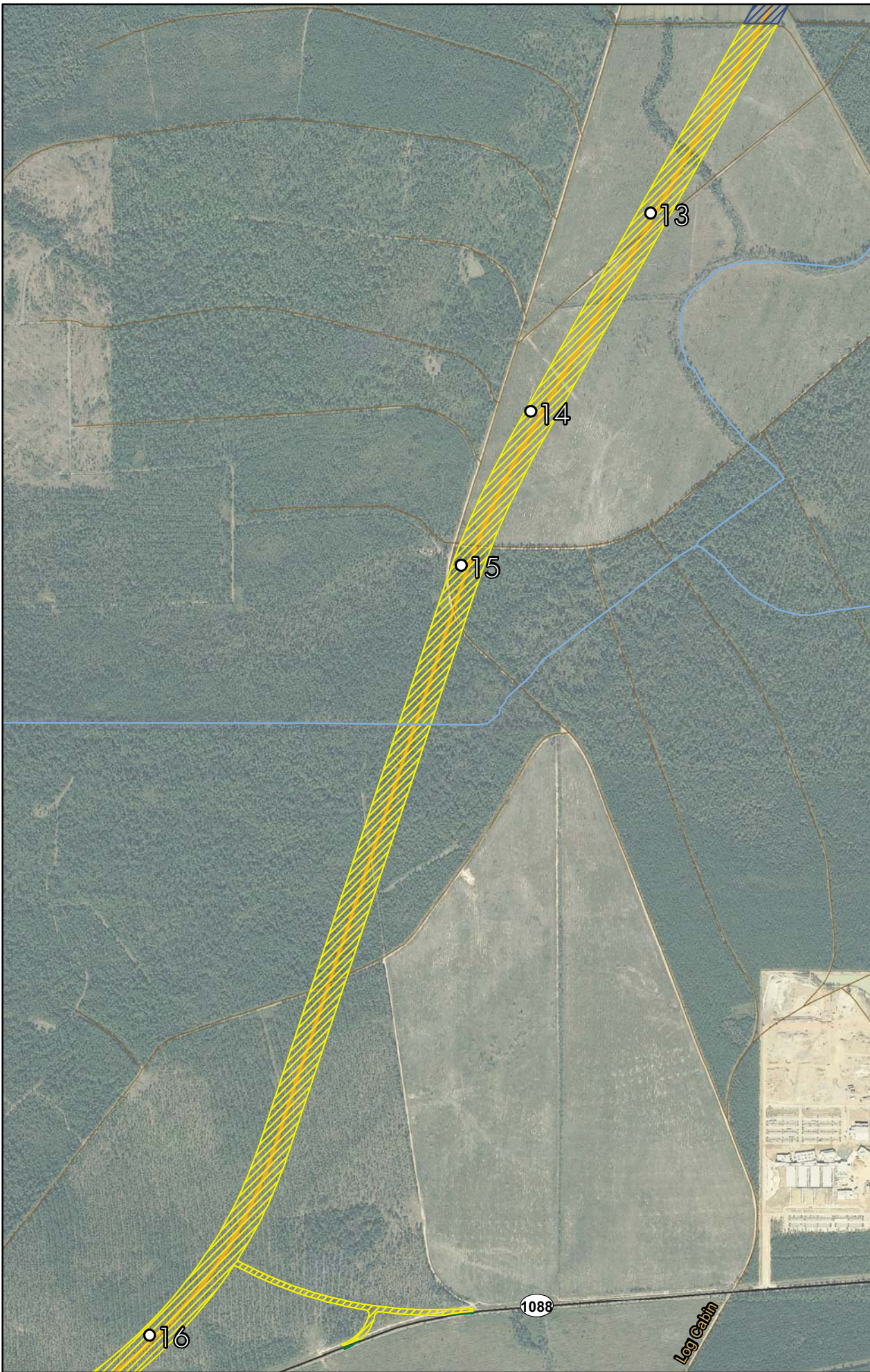


Source: 2008 DOQQ, USGS 2004



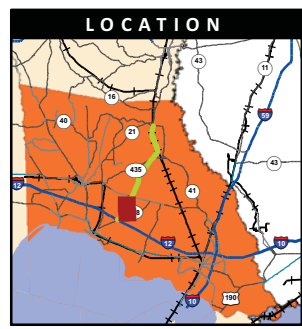
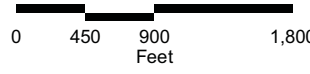


# Alternative P Wetland Delineation - 7



**LEGEND**

- Data Point
- Alternative P
- ▨ Wetlands/Waters of the US - Area 3
- ▨ Non Wetland
- Ⓢ Highway
- Local Street
- Stream

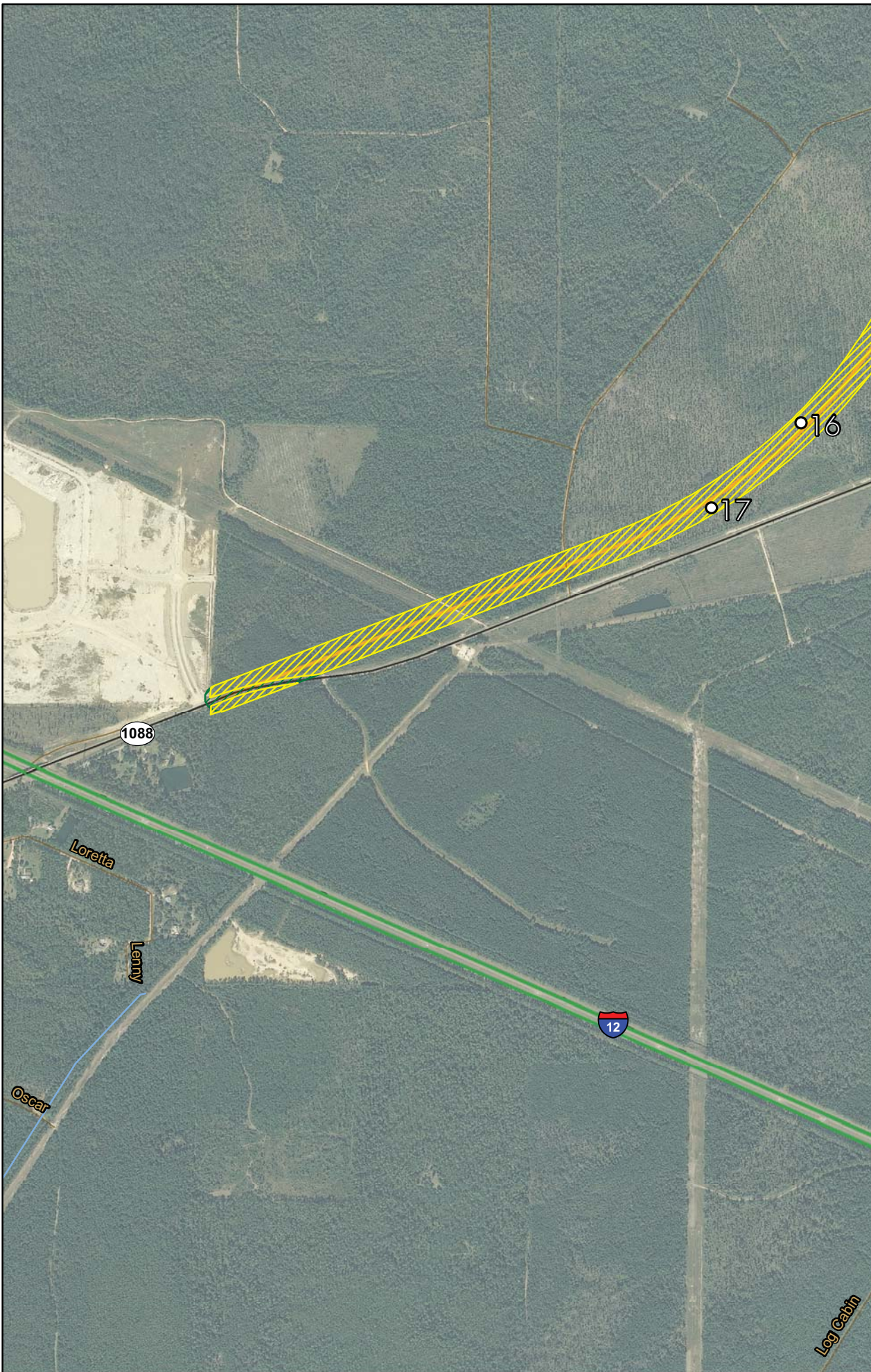


Source: 2008 DOQQ, USGS 2004



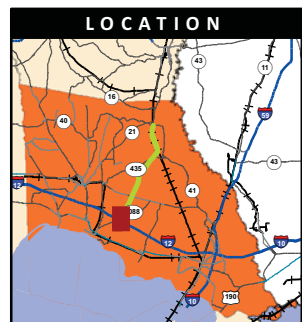
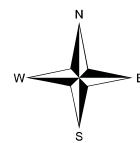


# Alternative P Wetland Delineation - 8



**LEGEND**

- Data Point
- Alternative P
- Wetlands/Waters of the US - Area 3
- Non Wetland
- Interstate
- Highway
- Local Street
- Stream



Log Cabin

Source: 2008 DOQQ, USGS 2004



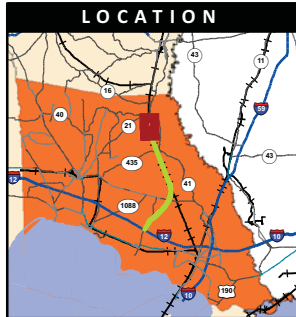
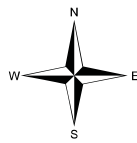


# Alternative Q Wetland Delineation - 1



**LEGEND**

- Data Point
- Alternative Q
- ▨ Wetlands/Waters of the US - Area 4
- ▨ Non Wetland
- ⓪ 434 Highway
- Local Street
- Stream



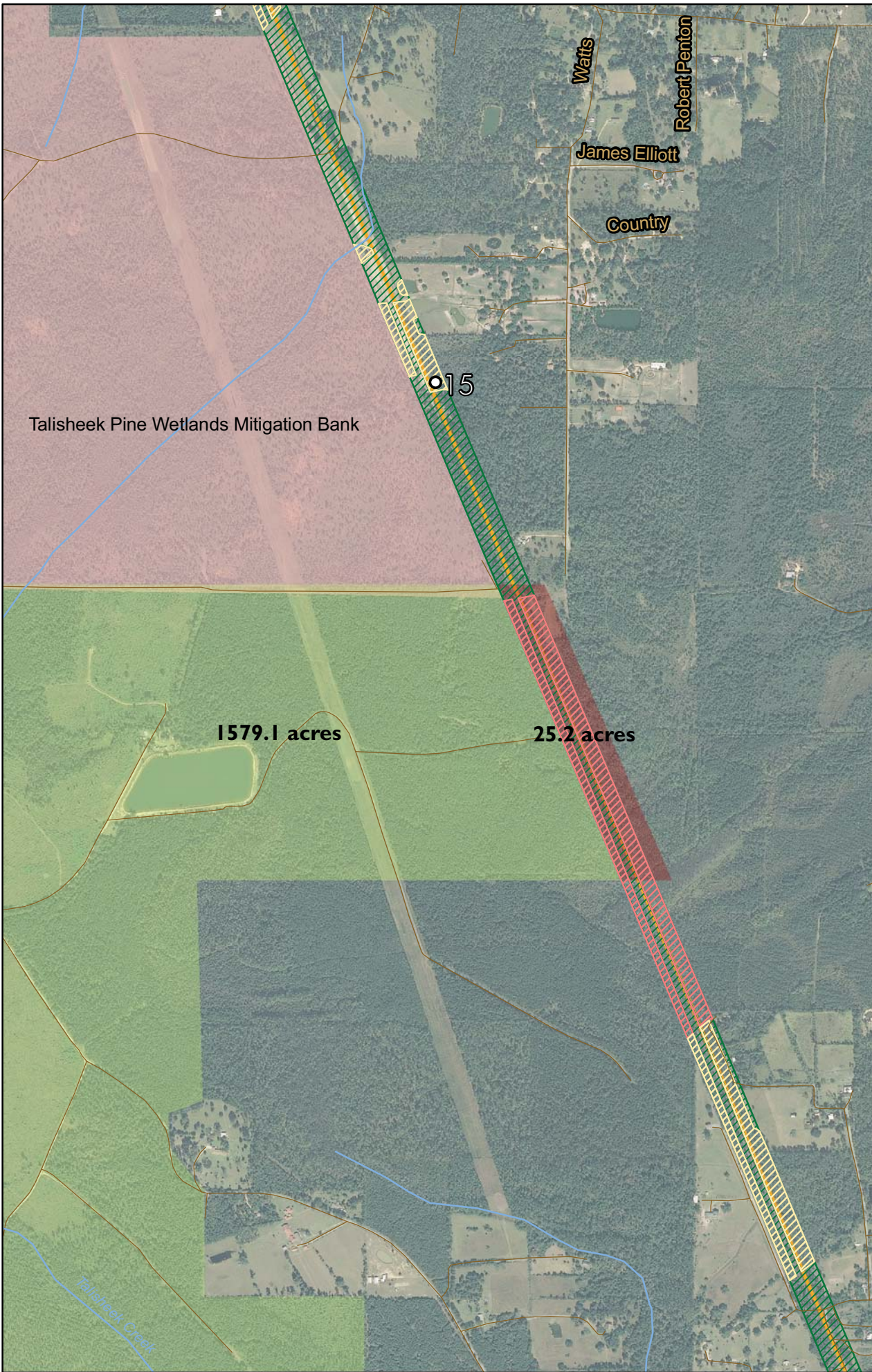
Source: 2008 DOQQ, USGS 2004



Talisheek Pine Wetlands Mitigation Bank

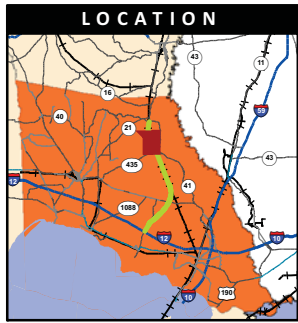
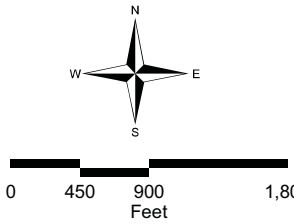


# Alternative Q Wetland Delineation - 2



**LEGEND**

- Data Point
- Alternative Q
- ▨ Wetlands/Waters of the US - Area 4
- ▨ Wetlands/Waters of the US - Area 5
- ▨ Non Wetland
- Dolly T Mitigation Bank
- Dolly T Impacted Acres
- Ⓞ 434 Highway
- Local Street
- Stream



1579.1 acres

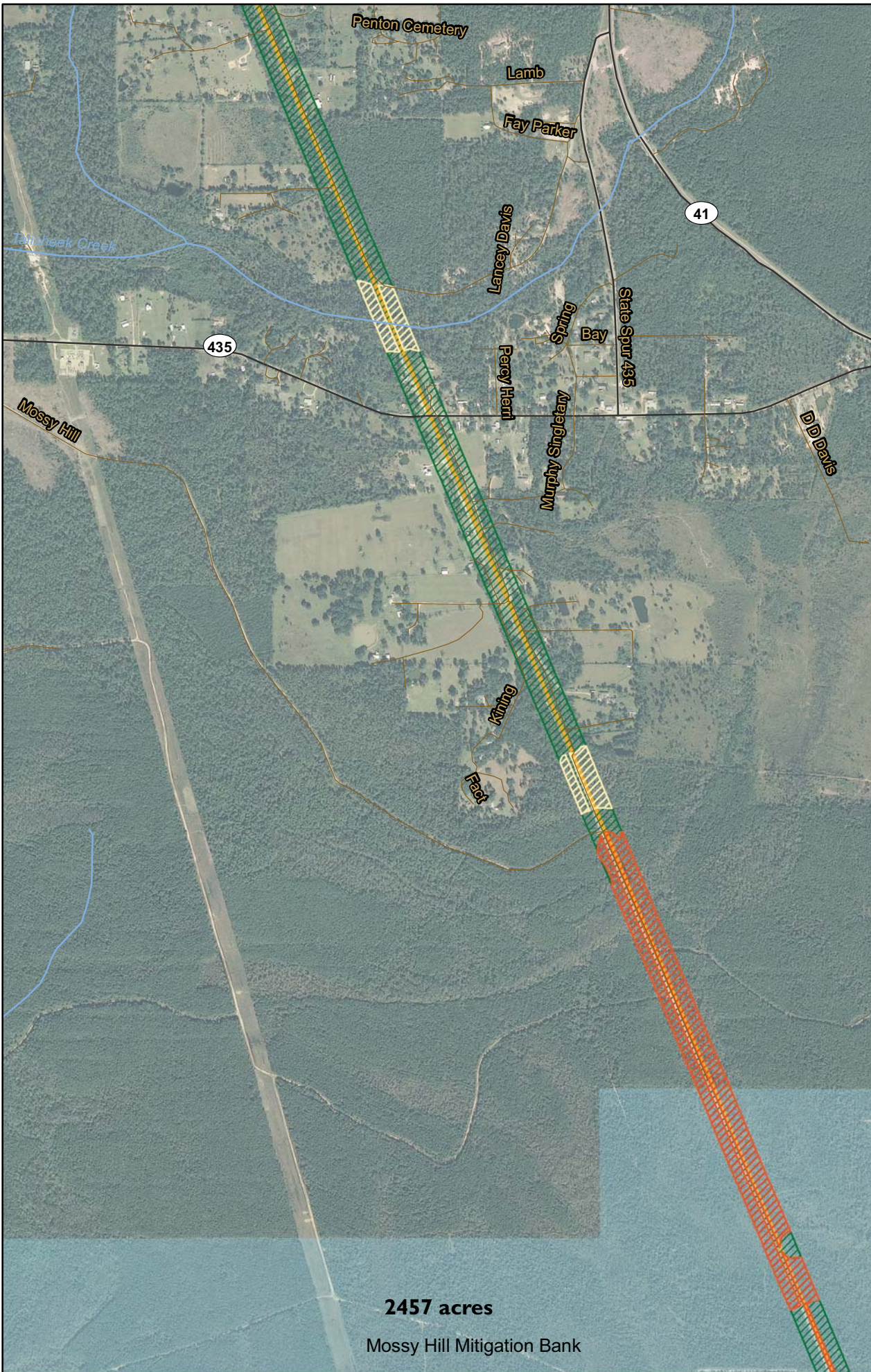
25.2 acres

Source: 2008 DOQQ, USGS 2004





# Alternative Q Wetland Delineation - 3



2457 acres  
Mossy Hill Mitigation Bank

**LEGEND**

- Data Point
- Alternative Q
- ▨ Wetlands/Waters of the US - Area 2
- ▨ Wetlands/Waters of the US - Area 4
- ▨ Non Wetland
- ⓪ 434 Highway
- Local Street
- Stream

North arrow and scale bar.

0 450 900 1,800 Feet

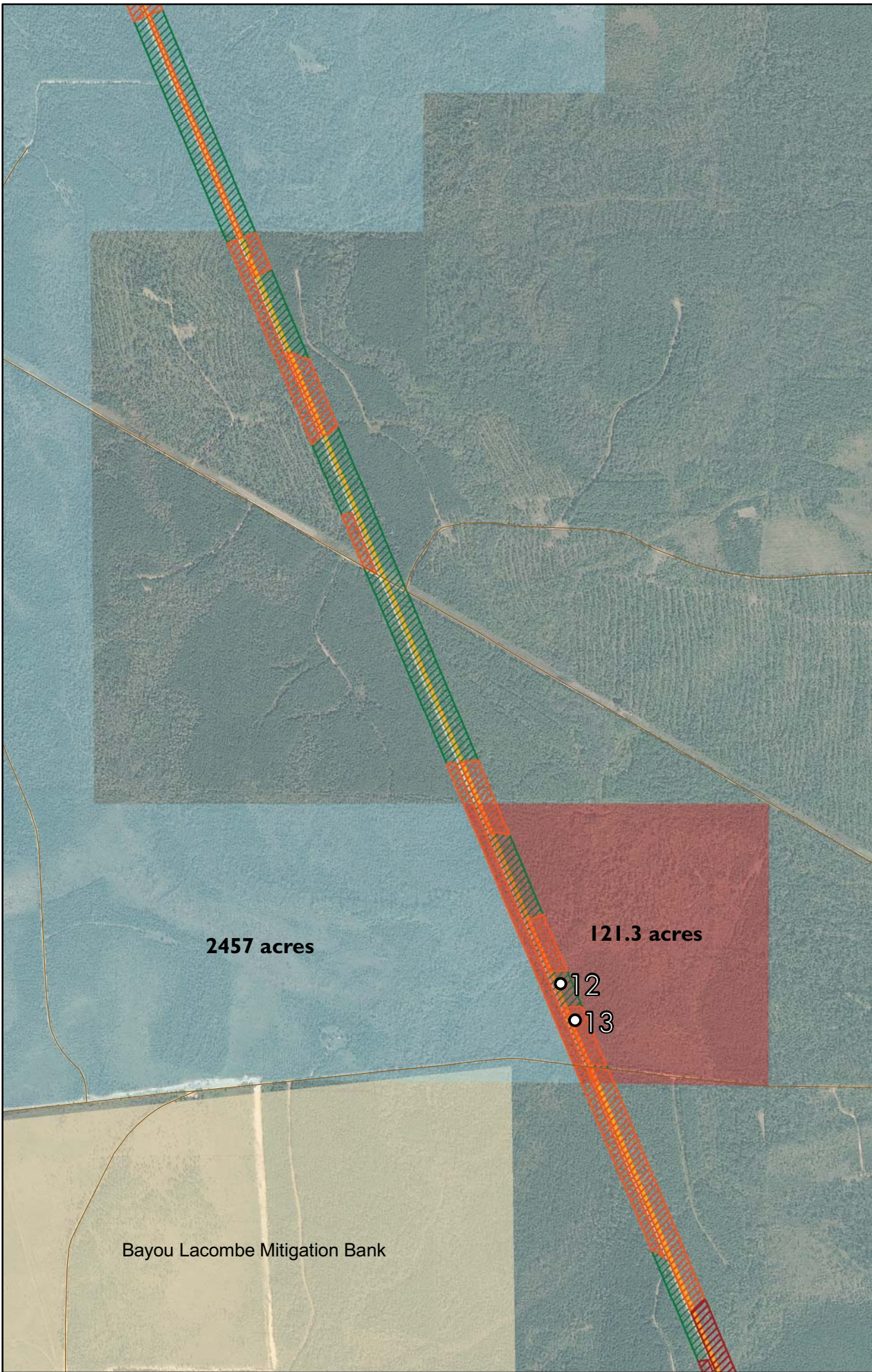
**LOCATION**

Source: 2008 DOQQ, USGS 2004



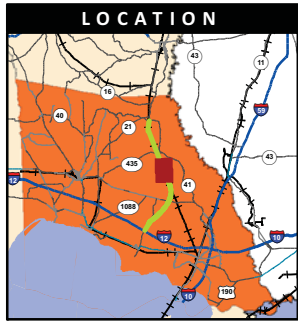
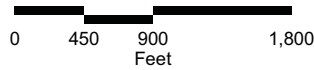


# Alternative Q Wetland Delineation - 4



**LEGEND**

- Data Point
- Alternative Q
- ▨ Wetlands/Waters of the US - Area 1
- ▨ Wetlands/Waters of the US - Area 2
- ▨ Non Wetland
- Mossy Hill Mitigation Bank
- Mossy Hill Impacted Acres
- ⓪ 434 Highway
- Local Street
- Stream



2457 acres

121.3 acres

12

13

Bayou Lacombe Mitigation Bank

Source: 2008 DOQQ, USGS 2004



**US Army Corps of Engineers**  
New Orleans District



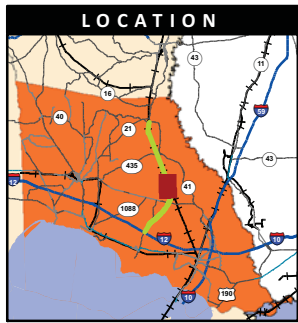
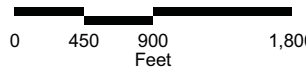


# Alternative Q Wetland Delineation - 5



**LEGEND**

- Data Point
- Alternative Q
- ▨ Wetlands/Waters of the US - Area 1
- ▨ Wetlands/Waters of the US - Area 2
- ▨ Non Wetland
- ⓪ 434 Highway
- Local Street
- Stream



Bayou Lacombe Mitigation Bank

Lacombe Bayou

Source: 2008 DOQQ, USGS 2004



**US Army Corps of Engineers**  
New Orleans District



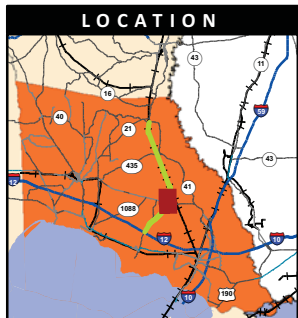


# Alternative Q Wetland Delineation - 6



**LEGEND**

- Data Point
- Alternative Q
- ▨ Wetlands/Waters of the US - Area 2
- ▨ Wetlands/Waters of the US - Area 5
- ▨ Non Wetland
- ⓪ 434 Highway
- Local Street
- Stream

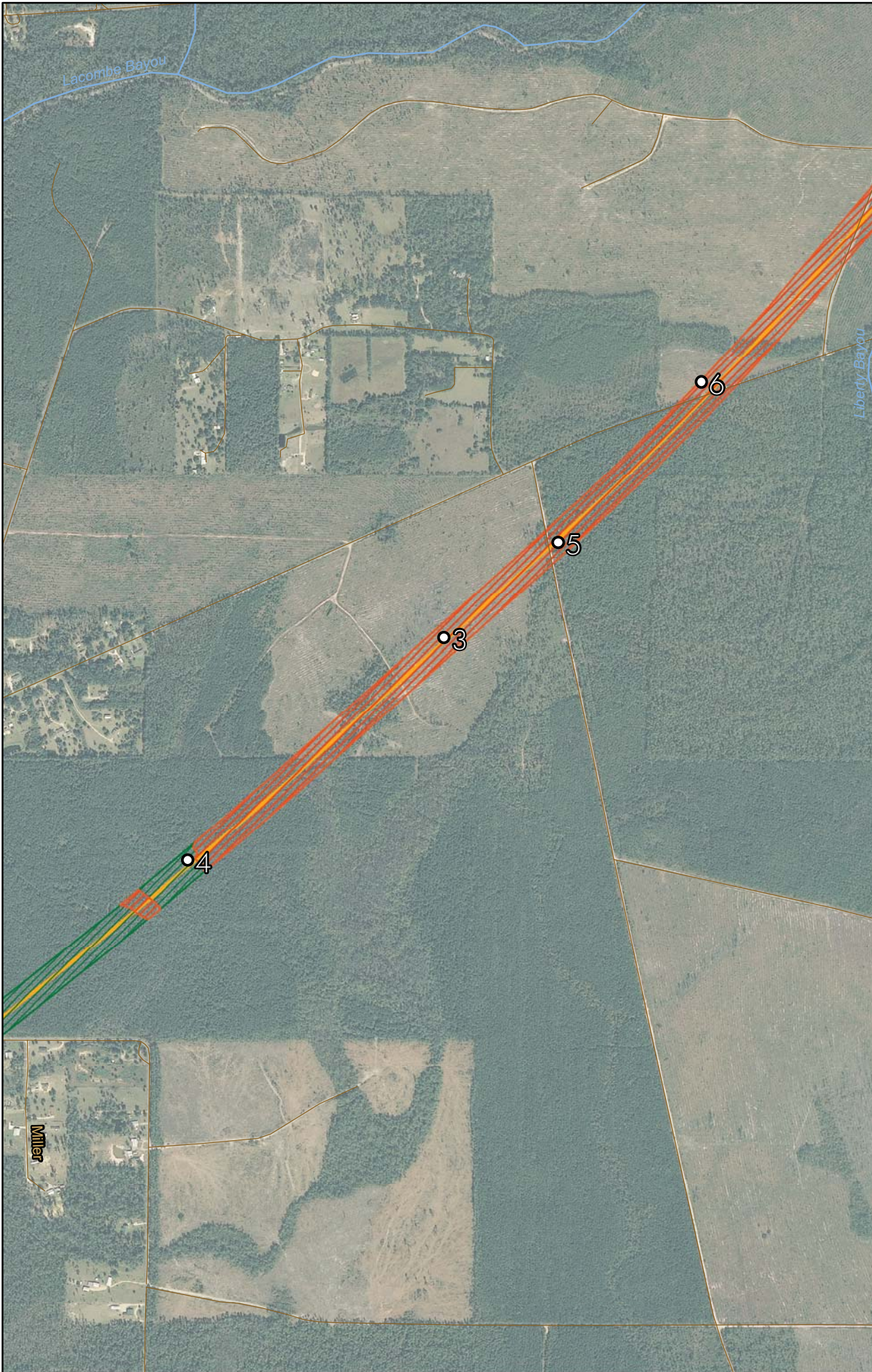


Source: 2008 DOQQ, USGS 2004



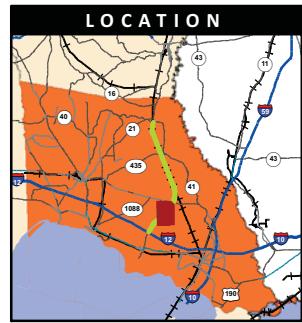
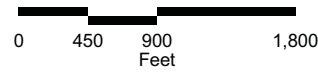


# Alternative Q Wetland Delineation - 7



**LEGEND**

- Data Point
- Alternative Q
- ▨ Wetlands/Waters of the US - Area 2
- ▨ Non Wetland
- ⓪ 434 Highway
- Local Street
- Stream

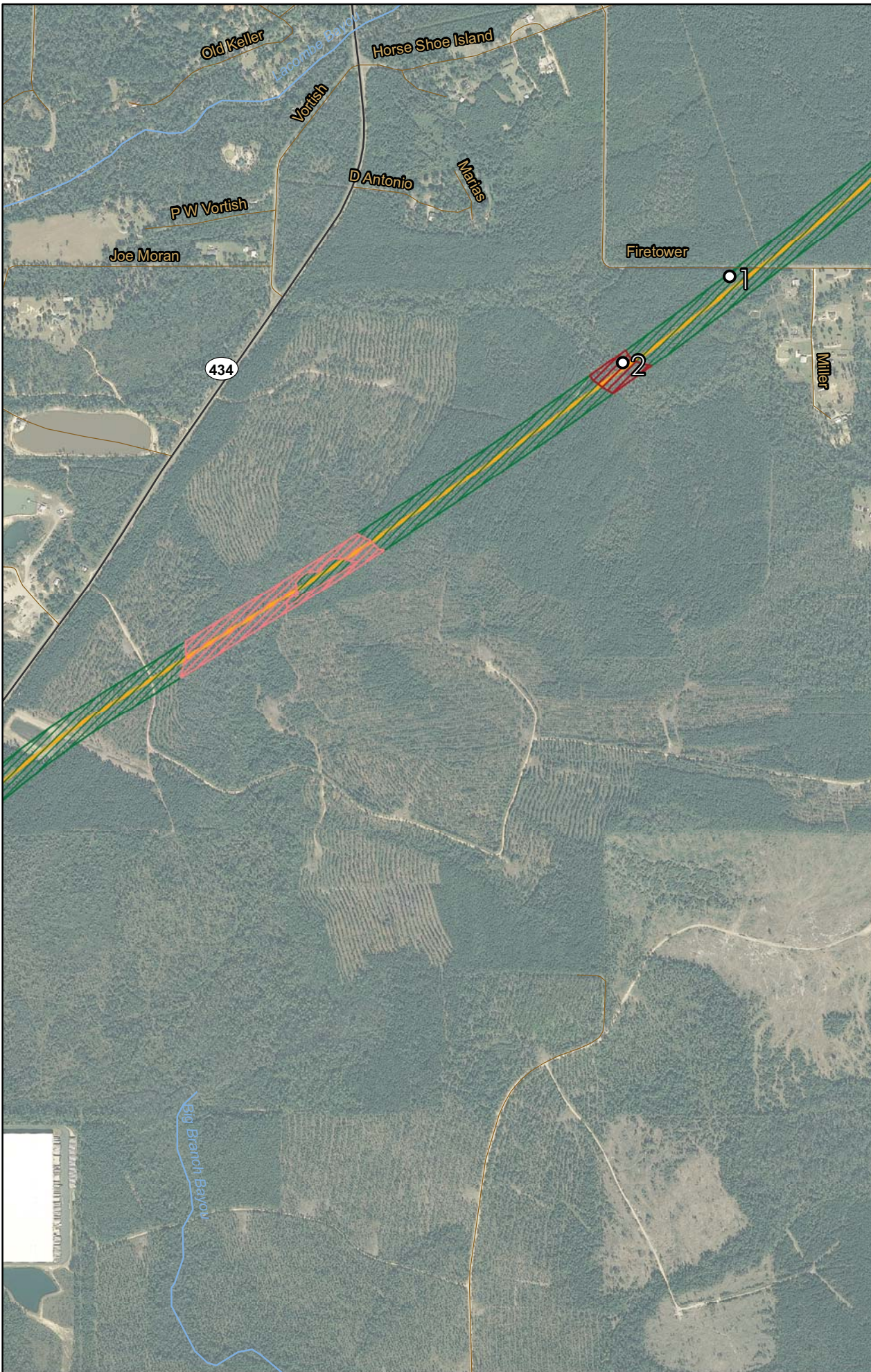


Source: 2008 DOQQ, USGS 2004



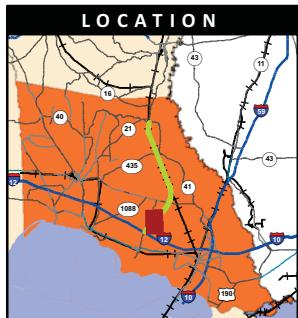


# Alternative Q Wetland Delineation - 8



**LEGEND**

- Data Point
- Alternative Q
- ▨ Wetlands/Waters of the US - Area 1
- ▨ Wetlands/Waters of the US - Area 5
- ▨ Non Wetland
- ⓪ 434 Highway
- Local Street
- Stream

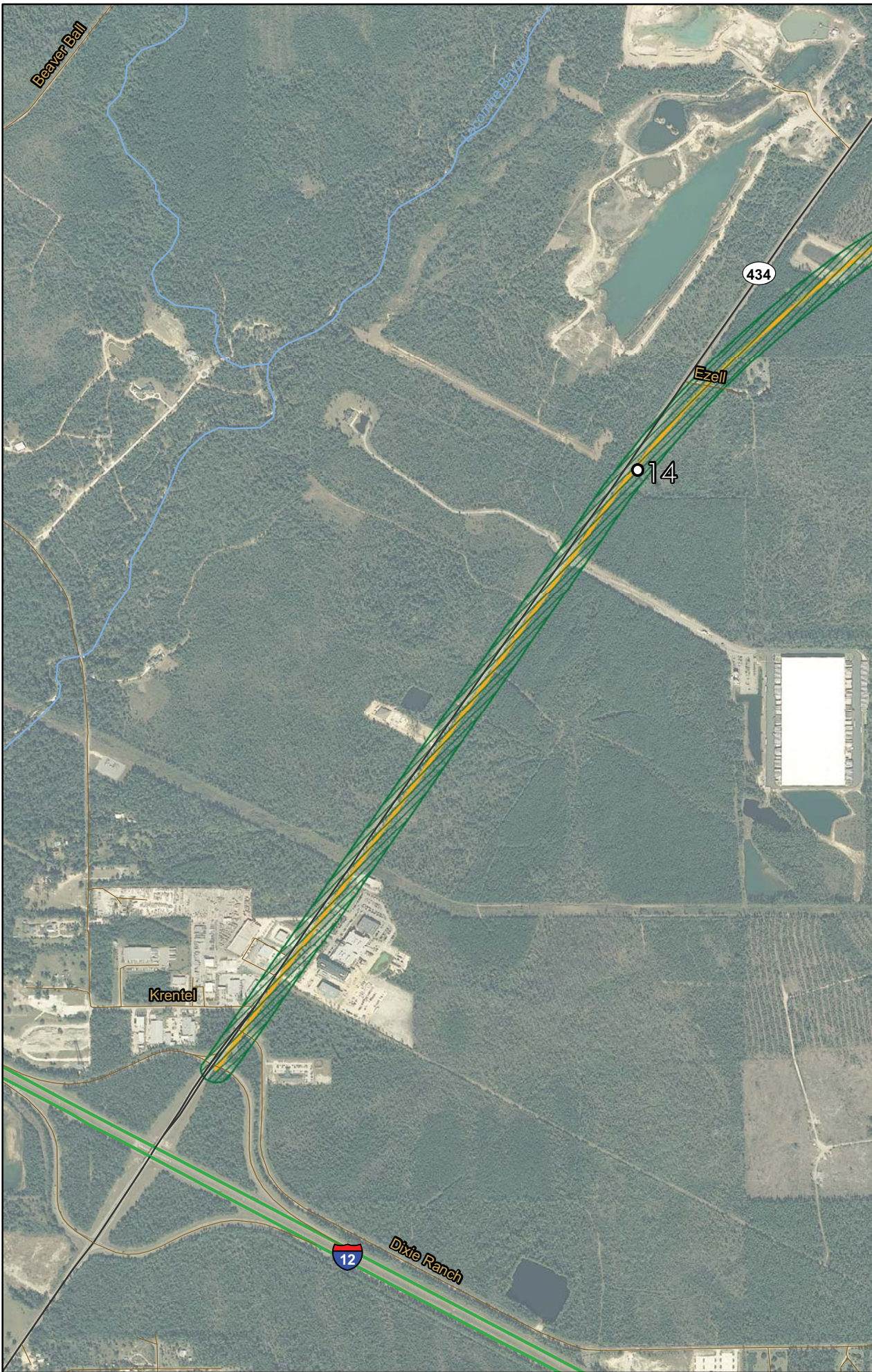


Source: 2008 DOQQ, USGS 2004



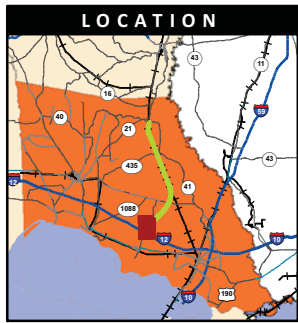


# Alternative Q Wetland Delineation - 9



**LEGEND**

- Data Point
- Alternative Q
- ▨ Non Wetland
- 12 Interstate
- 434 Highway
- Local Street
- Stream



Source: 2008 DOQQ, USGS 2004

